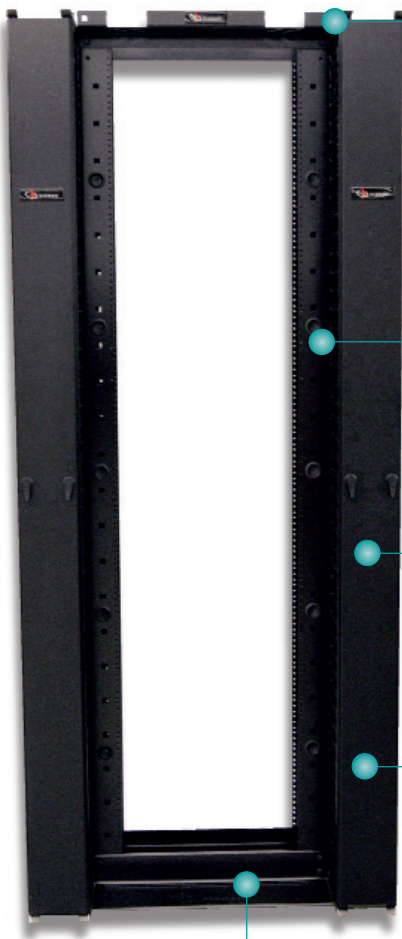


RS RACK SYSTEM

Siemon's cable management rack system (RS) combines a 2.1m (7 ft.) x 19 inch black aluminum or steel rack with cable management accessories to provide a complete management solution. Ideal for all size installations, the rack features fully usable 45 RMS capacity. An optional 1.2m (4 ft.) power strip is available and mounts directly to rear of rack to provide power to active electronics.



RACKS AND CABLE MANAGEMENT



Header bars incorporate unique slotted holes for securing cable trays routed perpendicular to or parallel with RS racks

High capacity twist-lock cable managers lock into place quickly without use of screws or mounting tools and can be easily located in many positions on the front, side, back, and within channel to provide customized cable management

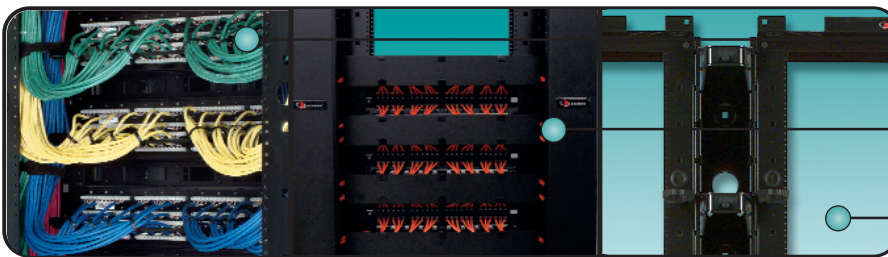
RS-07 shown with two VPC-6 Vertical Patching Channels (sold separately)

Vertical Patching Channels are available in standard 152mm (6 in.) version or new high capacity 304mm (12 in.) version

Mounting holes provided for anchoring rack to floor



Siemon has developed an extended depth RS rack for managing extra large volumes of horizontal cable



76mm (3 in.) x 152mm (6 in.) vertical side rail channels on rack provide large area for routing high volumes of horizontal or backbone cables

Comprehensive cable management can be created using Siemon's Vertical Patching Channels and RS Series Horizontal Cable Managers

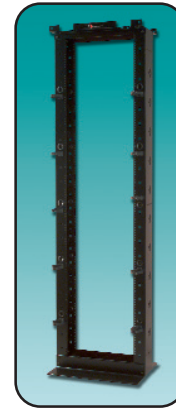
Optional vertical cable management channels allow a high volume of patch cords to be routed between two racks or within a single rack

PRODUCT INFORMATION

Siemon Rack System

RS-077 ft. x 19 inch (2.1m x 482mm) aluminum cable management rack system. Includes: rack assembly hardware, 10 high-capacity cable managers, 10 hook and loop cable managers, grommets, and ground lug

*height: 2.1m (7 ft.),
width: 609.6mm (24 in.),
depth: 457.2mm (18 in.)*



Add "-S" for Steel

Add "E" for Extended Depth: [0.37m (14.5 in.) rails] aluminum rack

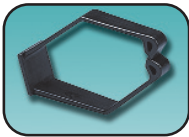
Note: Aluminum racks are intended for use with connecting hardware and cable managers only. For mounting of active equipment, steel racks are recommended.

RS Series Horizontal Cable Managers

These horizontal cable managers are designed for use with Siemon's RS series racks. The extended length dual-hinged cover extends across the vertical channels to fully conceal and protect patch cords into the vertical management.

- RS-RWM-1Single-sided 4" fingers, 1U
- RS-RWM-2DSDouble-sided 4" fingers, 2U
- RS-RWM-2Single-sided 4" fingers, 2U
- RS-RWM6-2Single-sided 6" fingers, 2U
- RS-RWM-4Single-sided 4" fingers, 4U
- RS-RWM6-4Single-sided 6" fingers, 4U

RS Series Rack Specifications	
U Space	45
Color	Black
Packaging	Ships unassembled in a carton
Standards Compliance	CEA-310-E, UL 1863, RoHS
Weight (w/packaging)	Aluminum: 20 kg (47 lbs) Steel: 34 kg (75 lbs)
Load Rating	Aluminum: 227 kg (500 lbs) Steel: 454 kg (1000 lbs)



RS-CH



RS-VCM



RS-TRAY

Rack Accessories

- RS-CHBox of 10 high-capacity cable managers for front of rack
- RS-VCMBox of 10 quarter-turn hook and loop cable managers [includes black 457.2mm (18 in.) manager
- RS-PO41.2m (4 ft.) power strip, North American, 110V, ten 15A outlets, resettable fuse (includes mounting hardware)
- RS-TRAYRack Top Cable Tray included nine quarter-turn cable managers and nine 457mm (18 in.) hook and loop cable managers

For related product information request Spec Sheet(s):
VPC Vertical Patching Channel (PROD-SS-VPC)

Because we continuously improve our products, Siemon reserves the right to change specifications and availability without prior notice.

North America
Watertown, CT USA
Phone (1) 860 945 4200 US
Phone (1) 888 425 6165 Canada

Europe/Middle East/Africa
Surrey, England
Phone (44) 0 1932 571771

Asia/Pacific
Shanghai, P.R. China
Phone (86) 21 5385 0303

Latin America
Bogota, Colombia
Phone (571) 657 1950