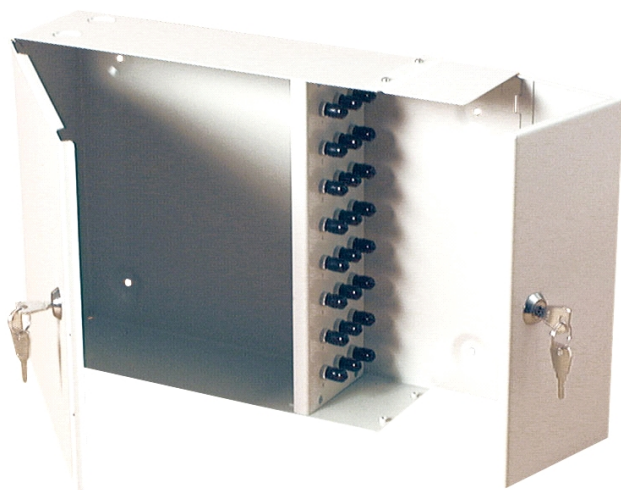


Excel 2 Door Lockable Fibre Optic Wall Mounted Enclosure

excel
without compromise.



✕ 2 Door Lockable

✕ LC, SC & ST Variants

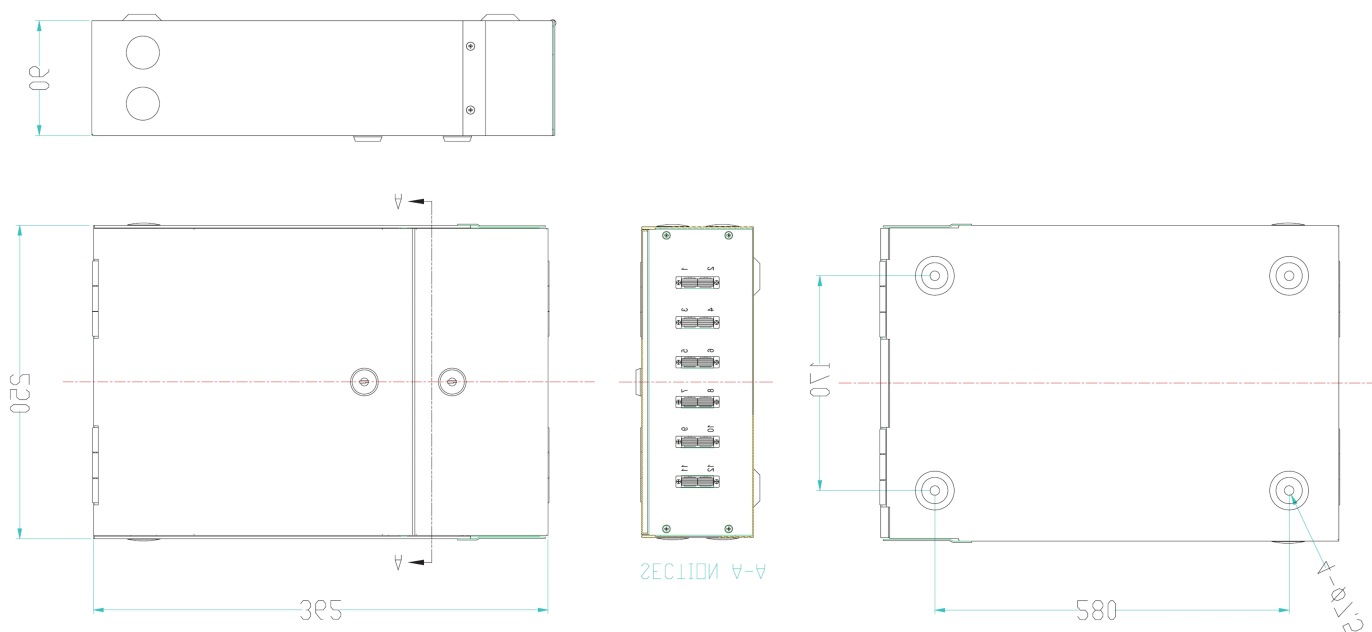
✕ 25 Year System Warranty

Features

- 2 Door Lockable
- Supplied with accessories
- LC, SC & ST Variants
- 25 Year System Warranty

Product Overview

The Excel 2 Door Lockable Fibre Optic Wall Mount Enclosures are designed for high-density, secure terminations. Their two door design ensures that both the terminations and the patching are safe. The boxes have 20mm knockouts and pre-drilled fixing holes. The enclosures are complete with the couplers and necessary accessories.



Product Specification

Detail	Value
Dimensions	362mm Wide x 250mm High x 90mm Deep
Wall fixing holes	4 qty 7.5mm
Operating Temperature Range	-25°C to +40°C
Storage Temperature Range	-25°C to +55°C
Relative Humidity	≤ 85% (30°C)
Material	Steel - SPCC
Colour	RAL 9002
Compliance	RoHS

LC Multimode Quad Adaptors

Detail	Value
Insertion Loss	≤0.20 dB @ 850 nm
Durability (500 matings)	0.2 dB maximum increase
Retention Force	200-600 grams
Operating Temperature Range	-40°C to +80°C
Storage Temperature Range	-40°C to +85°C
Compliance	RoHS

SC Multimode Duplex Adaptors

Detail	Value
Insertion Loss	0.20 dB Maximum
Durability (500 matings)	0.15 dB Maximum
Retention Force	200-600 grams
Housing Material	PBT (30% GF)

ST Multimode Adaptors

Detail	Value
Insertion Loss	0.20 dB Maximum
Durability (500 matings)	0.15 dB Maximum
Retention Force	200-600 grams
Operating Temperature Range	-40°C to +80°C
Compliance	RoHS
Housing Material	Zinc Alloy

Supplied Accessories

Accessory	Quantity
Cable Clamp PG13.5	2
Nylon Cable Tie	10
Adjustable Cable Clamp	6
Splice Holder	1
Twist Tie	6
Hole Blanks	4

Part Numbers

Part No.	Description
202-033	6 Port LC Quad 24-Core Multimode 2 Door Lockable Wall Mounted Enclosure - Loaded
202-034	12 Port LC Quad 48-Core Multimode 2 Door Lockable Wall Mounted Enclosure - Loaded
202-037	6 Port SC Duplex 2 Door Lockable Wall Mounted Enclosure - Loaded
202-038	12 Port SC Duplex 2 Door Lockable Wall Mounted Enclosure - Loaded
202-035	12 Port ST 2 Door Lockable Wall Mounted Enclosure - Loaded
202-036	24 Port ST 2 Door Lockable Wall Mounted Enclosure - Loaded

System Warranty

The Excel System Warranty provides a 25-year product and applications assurance of compliance with the industry performance standard appropriate to the class of cabling installed. The warranty may be applied for by an accredited Excel Partner who has designed, supplied and installed the said system.



S-Cabling Sp. z o.o.

ul. Kakolewska 21, , Leszno, , 64-100, Poland

Tel: + 48 65 528 71 99 Fax:

Email: s-cabling@s-cabling.pl Web: www.s-cabling.pl

S-Cabling