

Product Catalog 2015

Port-LockLine

AT&T Secure

LAN Cabling Products

AT&T Cabling Systems





*AT&T Cabling Systems
provide complete enterprise
solutions and
state-of-the-art LAN cabling
components for all needs.*

AT&T Cabling Systems

Our high-performance network infrastructure solutions based on innovative designs and highly advanced technology are the first choice for all applications. Faithful to the world-leading AT&T heritage, combining world-class reliability with the unique AT&T Millennium™ Lifetime warranty, AT&T Cabling Systems is your key to years of fail-safe and trouble-free operation, minimizing system downtime and maximizing your profits.

AT&T Cabling Systems



AT&T Cabling Systems Goals

AT&T Cabling Systems Continuous goals:

- *Supply high performance network infrastructure solutions, virtually anywhere in the world.*
- *Provide high performance advanced technology and services.*
- *Satisfy the IT infrastructure needs of our global customers.*
- *Provide continuous expert support and be a reliable partner to all our customers.*

These goals are achieved by a unique combination of deep knowledge of all LAN cabling aspects, integrity, teamwork & creativity, all provided under the trusted AT&T brand.

AT&T Cabling Systems

AT&T Port-LockLine

AT&T Port-LockLine connectivity solution is designed to prevent unauthorized or inadvertent changes to cabling networks in highly sensitive applications such as data-centers, enterprise networks including financial, educational, secure IT and military networks, where multiple physical layer access classifications are critical. AT&T Port-LockLine multiple physical layer access classifications is done by color coding.

AT&T Port-LockLine components are available for Category 6 and Category 6A RJ45 shielded and unshielded copper cabling and for SC and LC fiber-optic cabling. When any AT&T Port-LockLine cord or plug is inserted into any jack it automatically locks itself and can only be unplugged with the color-matched extraction tool.



AT&T Port-LockLine

AT&T Port-LockLine product series includes the following copper and fiber optic cabling components:

RJ45 Modular Cords
RJ45 Port Blockers
RJ45 Extraction Keys

SC Simplex Modular Cords
SC Simplex Port Blockers
SC Simplex Extraction Keys

LC Duplex Modular Cords
LC Duplex Port Blockers
LC Duplex Extraction Keys
LC Duplex Pigtails

AT&T Port-LockLine products are available in following product ranges:

Category 6 & Category 6A

Both shielded and unshielded

LC Duplex & SC Simplex

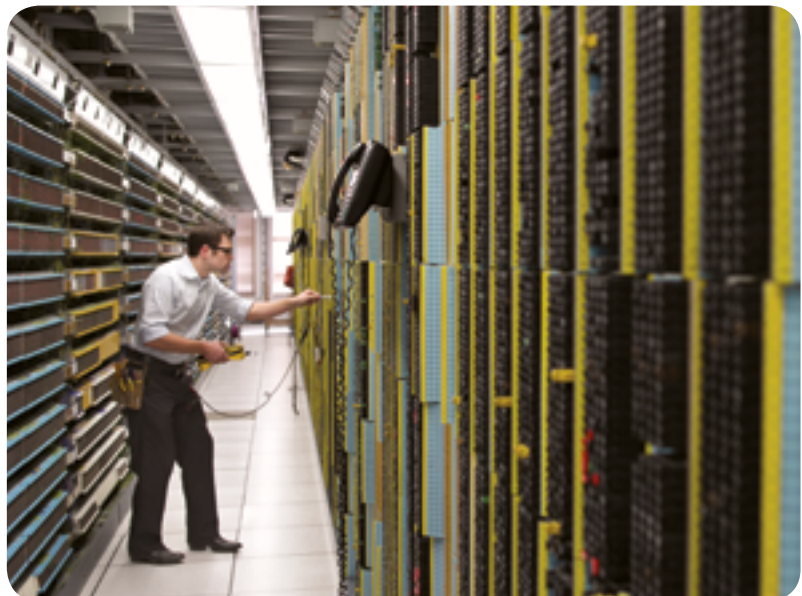
Both Singlemode and Multimode



AT&T Port-LockLine

Applications

- Military IT Networks.
- Secure Federal IT Networks.
- Commercial Data Centers.
- Private Networks.
- Industrial Process Control.
- Fiber Sensor Applications.



Features

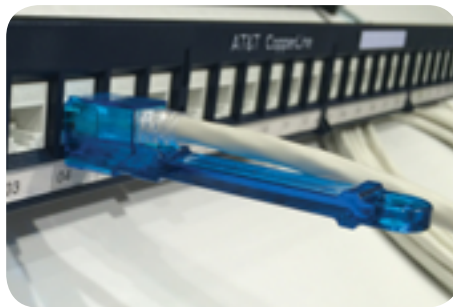
- Secure connectors lock into ports - Matched color extraction tool required for removal
- Master extraction keys available for selected personnel
- Compact Uniboot design available for LC Duplex cords
- Fiber type identification done by boot colors

AT&T Port-LockLine

Operation Instructions



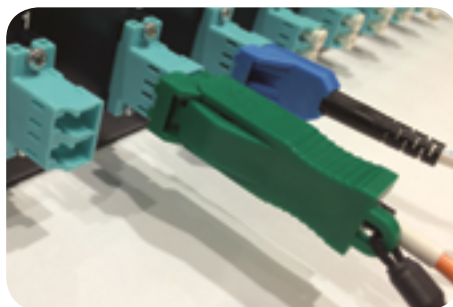
- Insert the modular cord into the port. The cord is now secured and cannot be unplugged without the correct extraction tool.



- In order to remove the modular cord insert a color-matching extraction tool.



- The plug can now be easily removed from the port.



Part F - Port-LockLine

1	Port-LockLine Category 6 Modular Cords	10-13
1.1	Cat6 Unshielded Port-Locking Modular Cords	10-11
1.2	Cat6 Shielded Port-Locking Modular Cords	12-13
2	Port-LockLine Category 6A Modular Cords	14-17
2.1	Cat6A Unshielded Port-Locking Modular Cords.....	14-15
2.2	Cat6A Shielded Port-Locking Modular Cords	16-17
3	RJ45 Universal Port Locking Plugs	18
4	RJ45 Universal Extraction Keys	19
5	Port-LockLine FO Cords & Pigtails	21-28
5.1	Simplex Cords.....	23-24
5.1.1	<i>SC/UPC Cords</i>	23-24
5.1.1.1	SC/UPC MultiMode Port-Locking Cords.....	23
5.1.1.2	SC/UPC SingleMode Port-Locking Cords	24
5.1.2	<i>SC/APC Cords</i>	25
5.1.2.1	SC/APC Singlemode Port-Locking Cords.....	25
5.2	Duplex Cords	26-30
5.2.1	<i>LC/UPC Cords</i>	26-29
5.2.1.1	LC/UPC MultiMode (Uniboot) Port-Locking Cords.....	26-27
5.2.1.2	LC/UPC SingleMode (Uniboot) Port-Locking Cords	28-29
5.3	Port-Locking Pigtails.....	30
6	Port Locking Plugs	31-32
6.1	SC Simplex Universal Port Locking Plugs	31
6.2	LC Duplex Universal Port Locking Plugs	32
7	Universal Extraction Keys	33-34
7.1	SC Simplex Universal Extraction Keys	33
7.2	LC Duplex Universal Extraction Keys	34

AT&T Cabling Systems

Port-LockLine Copper Solutions

Secure Shielded & Unshielded RJ45 Systems Modular Cords, RJ45 Blockers & Extraction Tools

- Port-LockLine Category 6
- Port-LockLine Category 6A



AT&T Port-LockLine Category 6 Unshielded 100 Ohm RJ45 Port-Locking Modular Cords

Description

Unshielded RJ45/RJ45 modular cords with port-locking mechanism:	
Frequency range	1-250 MHz
Conductor	24 AWG 7x0.20 mm stranded bare copper
Insulation	PO
Color code	ANSI/TIA-568-C.2
Jacket	LSOH
Jacket color	Gray
Boot color	Black

Standard & EU Directives Conformance

- Category 6 modular cords according to ISO/IEC 11801
- Category 6 modular cords according to EN 50173
- Category 6 modular cords according to ANSI/TIA-568-C.2
- IEC 60332-1 (cable) and UL94 V-0 (plug) flame tests
- EU Directive 2011/65/EU (RoHS-2)

Mechanical Properties

Impedance	100 Ohm nom.
Pin-pair assignment	T568B
Plug contacts	50µ-Inch Gold plating
Plug housing	FR Polycarbonate
Operating temperature	-20 to +60C
Voltage rating	75 Vdc max.
Ampacity	1.0 Ampere max.
Insulation resistance	500 MegaOhm min. @500 Vdc



Ordering Information

Description	Key Color	Length m	Jacket Color	Boot Color	Packaging	P/N
4-Pair 24 AWG RJ45/RJ45 Unshielded CAT6 LSOH Port-LockLine Cord	Black	0.5	Gray	Transparent	1/Bag	14U06HA005P-BK61
4-Pair 24 AWG RJ45/RJ45 Unshielded CAT6 LSOH Port-LockLine Cord	Black	1.0	Gray	Transparent	1/Bag	14U06HA010P-BK61
4-Pair 24 AWG RJ45/RJ45 Unshielded CAT6 LSOH Port-LockLine Cord	Black	2.0	Gray	Transparent	1/Bag	14U06HA020P-BK61
4-Pair 24 AWG RJ45/RJ45 Unshielded CAT6 LSOH Port-LockLine Cord	Black	3.0	Gray	Transparent	1/Bag	14U06HA030P-BK61
4-Pair 24 AWG RJ45/RJ45 Unshielded CAT6 LSOH Port-LockLine Cord	Black	5.0	Gray	Transparent	1/Bag	14U06HA050P-BK61
4-Pair 24 AWG RJ45/RJ45 Unshielded CAT6 LSOH Port-LockLine Cord	Black	10	Gray	Transparent	1/Bag	14U06HA100P-BK61

Continued on page F.1.1a

AT&T Port-LockLine Category 6

Unshielded 100 Ohm RJ45 Port-Locking Modular Cords (contd.)

Ordering Information

Description	Key Color	Length m	Jacket Color	Boot Color	Packaging	P/N
4-Pair 24 AWG RJ45/RJ45 Unshielded CAT6 LS0H Port-LockLine Cord	Orange	0.5	Gray	Transparent	1/Bag	14U06HA005P-OR61
4-Pair 24 AWG RJ45/RJ45 Unshielded CAT6 LS0H Port-LockLine Cord	Orange	1.0	Gray	Transparent	1/Bag	14U06HA010P-OR61
4-Pair 24 AWG RJ45/RJ45 Unshielded CAT6 LS0H Port-LockLine Cord	Orange	2.0	Gray	Transparent	1/Bag	14U06HA020P-OR61
4-Pair 24 AWG RJ45/RJ45 Unshielded CAT6 LS0H Port-LockLine Cord	Orange	3.0	Gray	Transparent	1/Bag	14U06HA030P-OR61
4-Pair 24 AWG RJ45/RJ45 Unshielded CAT6 LS0H Port-LockLine Cord	Orange	5.0	Gray	Transparent	1/Bag	14U06HA050P-OR61
4-Pair 24 AWG RJ45/RJ45 Unshielded CAT6 LS0H Port-LockLine Cord	Orange	10	Gray	Transparent	1/Bag	14U06HA100P-OR61
4-Pair 24 AWG RJ45/RJ45 Unshielded CAT6 LS0H Port-LockLine Cord	Yellow	0.5	Gray	Transparent	1/Bag	14U06HA005P-YL61
4-Pair 24 AWG RJ45/RJ45 Unshielded CAT6 LS0H Port-LockLine Cord	Yellow	1.0	Gray	Transparent	1/Bag	14U06HA010P-YL61
4-Pair 24 AWG RJ45/RJ45 Unshielded CAT6 LS0H Port-LockLine Cord	Yellow	2.0	Gray	Transparent	1/Bag	14U06HA020P-YL61
4-Pair 24 AWG RJ45/RJ45 Unshielded CAT6 LS0H Port-LockLine Cord	Yellow	3.0	Gray	Transparent	1/Bag	14U06HA030P-YL61
4-Pair 24 AWG RJ45/RJ45 Unshielded CAT6 LS0H Port-LockLine Cord	Yellow	5.0	Gray	Transparent	1/Bag	14U06HA050P-YL61
4-Pair 24 AWG RJ45/RJ45 Unshielded CAT6 LS0H Port-LockLine Cord	Yellow	10	Gray	Transparent	1/Bag	14U06HA100P-YL61
4-Pair 24 AWG RJ45/RJ45 Unshielded CAT6 LS0H Port-LockLine Cord	Red	0.5	Gray	Transparent	1/Bag	14U06HA005P-RD61
4-Pair 24 AWG RJ45/RJ45 Unshielded CAT6 LS0H Port-LockLine Cord	Red	1.0	Gray	Transparent	1/Bag	14U06HA010P-RD61
4-Pair 24 AWG RJ45/RJ45 Unshielded CAT6 LS0H Port-LockLine Cord	Red	2.0	Gray	Transparent	1/Bag	14U06HA020P-RD61
4-Pair 24 AWG RJ45/RJ45 Unshielded CAT6 LS0H Port-LockLine Cord	Red	3.0	Gray	Transparent	1/Bag	14U06HA030P-RD61
4-Pair 24 AWG RJ45/RJ45 Unshielded CAT6 LS0H Port-LockLine Cord	Red	5.0	Gray	Transparent	1/Bag	14U06HA050P-RD61
4-Pair 24 AWG RJ45/RJ45 Unshielded CAT6 LS0H Port-LockLine Cord	Red	10	Gray	Transparent	1/Bag	14U06HA100P-RD61
4-Pair 24 AWG RJ45/RJ45 Unshielded CAT6 LS0H Port-LockLine Cord	Blue	0.5	Gray	Transparent	1/Bag	14U06HA005P-BL61
4-Pair 24 AWG RJ45/RJ45 Unshielded CAT6 LS0H Port-LockLine Cord	Blue	1.0	Gray	Transparent	1/Bag	14U06HA010P-BL61
4-Pair 24 AWG RJ45/RJ45 Unshielded CAT6 LS0H Port-LockLine Cord	Blue	2.0	Gray	Transparent	1/Bag	14U06HA020P-BL61
4-Pair 24 AWG RJ45/RJ45 Unshielded CAT6 LS0H Port-LockLine Cord	Blue	3.0	Gray	Transparent	1/Bag	14U06HA030P-BL61
4-Pair 24 AWG RJ45/RJ45 Unshielded CAT6 LS0H Port-LockLine Cord	Blue	5.0	Gray	Transparent	1/Bag	14U06HA050P-BL61
4-Pair 24 AWG RJ45/RJ45 Unshielded CAT6 LS0H Port-LockLine Cord	Blue	10	Gray	Transparent	1/Bag	14U06HA100P-BL61
4-Pair 24 AWG RJ45/RJ45 Unshielded CAT6 LS0H Port-LockLine Cord	Green	0.5	Gray	Transparent	1/Bag	14U06HA005P-GN61
4-Pair 24 AWG RJ45/RJ45 Unshielded CAT6 LS0H Port-LockLine Cord	Green	1.0	Gray	Transparent	1/Bag	14U06HA010P-GN61
4-Pair 24 AWG RJ45/RJ45 Unshielded CAT6 LS0H Port-LockLine Cord	Green	2.0	Gray	Transparent	1/Bag	14U06HA020P-GN61
4-Pair 24 AWG RJ45/RJ45 Unshielded CAT6 LS0H Port-LockLine Cord	Green	3.0	Gray	Transparent	1/Bag	14U06HA030P-GN61
4-Pair 24 AWG RJ45/RJ45 Unshielded CAT6 LS0H Port-LockLine Cord	Green	5.0	Gray	Transparent	1/Bag	14U06HA050P-GN61
4-Pair 24 AWG RJ45/RJ45 Unshielded CAT6 LS0H Port-LockLine Cord	Green	10	Gray	Transparent	1/Bag	14U06HA100P-GN61
4-Pair 24 AWG RJ45/RJ45 Unshielded CAT6 LS0H Port-LockLine Cord	Purple	0.5	Gray	Transparent	1/Bag	14U06HA005P-PU61
4-Pair 24 AWG RJ45/RJ45 Unshielded CAT6 LS0H Port-LockLine Cord	Purple	1.0	Gray	Transparent	1/Bag	14U06HA010P-PU61
4-Pair 24 AWG RJ45/RJ45 Unshielded CAT6 LS0H Port-LockLine Cord	Purple	2.0	Gray	Transparent	1/Bag	14U06HA020P-PU61
4-Pair 24 AWG RJ45/RJ45 Unshielded CAT6 LS0H Port-LockLine Cord	Purple	3.0	Gray	Transparent	1/Bag	14U06HA030P-PU61
4-Pair 24 AWG RJ45/RJ45 Unshielded CAT6 LS0H Port-LockLine Cord	Purple	5.0	Gray	Transparent	1/Bag	14U06HA050P-PU61
4-Pair 24 AWG RJ45/RJ45 Unshielded CAT6 LS0H Port-LockLine Cord	Purple	10	Gray	Transparent	1/Bag	14U06HA100P-PU61
4-Pair 24 AWG RJ45/RJ45 Unshielded CAT6 LS0H Port-LockLine Cord	White	0.5	Gray	Transparent	1/Bag	14U06HA005P-WT61
4-Pair 24 AWG RJ45/RJ45 Unshielded CAT6 LS0H Port-LockLine Cord	White	1.0	Gray	Transparent	1/Bag	14U06HA010P-WT61
4-Pair 24 AWG RJ45/RJ45 Unshielded CAT6 LS0H Port-LockLine Cord	White	2.0	Gray	Transparent	1/Bag	14U06HA020P-WT61
4-Pair 24 AWG RJ45/RJ45 Unshielded CAT6 LS0H Port-LockLine Cord	White	3.0	Gray	Transparent	1/Bag	14U06HA030P-WT61
4-Pair 24 AWG RJ45/RJ45 Unshielded CAT6 LS0H Port-LockLine Cord	White	5.0	Gray	Transparent	1/Bag	14U06HA050P-WT61
4-Pair 24 AWG RJ45/RJ45 Unshielded CAT6 LS0H Port-LockLine Cord	White	10	Gray	Transparent	1/Bag	14U06HA100P-WT61

AT&T Port-LockLine Category 6 Shielded 100 Ohm RJ45 Port Locking Modular Cords

Description

Shielded RJ45/RJ45 S/FTP modular cords with port-locking mechanism:

Frequency range	1-250 MHz
Conductor	26 AWG 7x0.16 mm stranded bare copper
Insulation	PO
Color code	ANSI/TIA-568-C.2
Individual pair shield	Aluminum foil
Overall shield	Tin-coated copper braid
Jacket	LSOH
Jacket color	Gray
Boot color	Black

Standard & EU Directives Conformance

- Category 6 modular cords according to ISO/IEC 11801
- Category 6 modular cords according to EN 50173
- Category 6 modular cords according to ANSI/TIA-568-C.2
- IEC 60332-1 (cable) and UL94 V-0 (plug) flame tests
- EU Directive 2011/65/EU (RoHS-2)

Mechanical Properties

Impedance	100 Ohm nom.
Pin-pair assignment	T568B
Plug contacts	50µ-Inch Gold plating
Plug shield	Corrosion resistant metal
Plug housing	FR Polycarbonate
Operating temperature	-20 to +60C
Voltage rating	75 Vdc max.
Ampacity	1.0 Ampere max.
Insulation resistance	500 MegaOhm min. @500 Vdc



Ordering Information

Description	Key Color	Length m	Jacket Color	Boot Color	Packaging	P/N
4-Pair 26 AWG RJ45/RJ45 Shielded S/FTP CAT6 LSOH Port-LockLine Cord	Black	0.5	Gray	Transparent	1/Bag	14S06HA005P-BK61
4-Pair 26 AWG RJ45/RJ45 Shielded S/FTP CAT6 LSOH Port-LockLine Cord	Black	1.0	Gray	Transparent	1/Bag	14S06HA010P-BK61
4-Pair 26 AWG RJ45/RJ45 Shielded S/FTP CAT6 LSOH Port-LockLine Cord	Black	2.0	Gray	Transparent	1/Bag	14S06HA020P-BK61
4-Pair 26 AWG RJ45/RJ45 Shielded S/FTP CAT6 LSOH Port-LockLine Cord	Black	3.0	Gray	Transparent	1/Bag	14S06HA030P-BK61
4-Pair 26 AWG RJ45/RJ45 Shielded S/FTP CAT6 LSOH Port-LockLine Cord	Black	5.0	Gray	Transparent	1/Bag	14S06HA050P-BK61
4-Pair 26 AWG RJ45/RJ45 Shielded S/FTP CAT6 LSOH Port-LockLine Cord	Black	10	Gray	Transparent	1/Bag	14S06HA100P-BK61

Continued on page F.1.2a

AT&T Port-LockLine Category 6

Shielded 100 Ohm RJ45 Port Locking Modular Cords (contd.)

Ordering Information

Description	Key Color	Length m	Jacket Color	Boot Color	Packaging	P/N
4-Pair 26 AWG RJ45/RJ45 Shielded S/FTP CAT6 LSOH Port-LockLine Cord	Orange	0.5	Gray	Transparent	1/Bag	14S06HA005P-OR61
4-Pair 26 AWG RJ45/RJ45 Shielded S/FTP CAT6 LSOH Port-LockLine Cord	Orange	1.0	Gray	Transparent	1/Bag	14S06HA010P-OR61
4-Pair 26 AWG RJ45/RJ45 Shielded S/FTP CAT6 LSOH Port-LockLine Cord	Orange	2.0	Gray	Transparent	1/Bag	14S06HA020P-OR61
4-Pair 26 AWG RJ45/RJ45 Shielded S/FTP CAT6 LSOH Port-LockLine Cord	Orange	3.0	Gray	Transparent	1/Bag	14S06HA030P-OR61
4-Pair 26 AWG RJ45/RJ45 Shielded S/FTP CAT6 LSOH Port-LockLine Cord	Orange	5.0	Gray	Transparent	1/Bag	14S06HA050P-OR61
4-Pair 26 AWG RJ45/RJ45 Shielded S/FTP CAT6 LSOH Port-LockLine Cord	Orange	10	Gray	Transparent	1/Bag	14S06HA100P-OR61
4-Pair 26 AWG RJ45/RJ45 Shielded S/FTP CAT6 LSOH Port-LockLine Cord	Yellow	0.5	Gray	Transparent	1/Bag	14S06HA005P-YL61
4-Pair 26 AWG RJ45/RJ45 Shielded S/FTP CAT6 LSOH Port-LockLine Cord	Yellow	1.0	Gray	Transparent	1/Bag	14S06HA010P-YL61
4-Pair 26 AWG RJ45/RJ45 Shielded S/FTP CAT6 LSOH Port-LockLine Cord	Yellow	2.0	Gray	Transparent	1/Bag	14S06HA020P-YL61
4-Pair 26 AWG RJ45/RJ45 Shielded S/FTP CAT6 LSOH Port-LockLine Cord	Yellow	3.0	Gray	Transparent	1/Bag	14S06HA030P-YL61
4-Pair 26 AWG RJ45/RJ45 Shielded S/FTP CAT6 LSOH Port-LockLine Cord	Yellow	5.0	Gray	Transparent	1/Bag	14S06HA050P-YL61
4-Pair 26 AWG RJ45/RJ45 Shielded S/FTP CAT6 LSOH Port-LockLine Cord	Yellow	10	Gray	Transparent	1/Bag	14S06HA100P-YL61
4-Pair 26 AWG RJ45/RJ45 Shielded S/FTP CAT6 LSOH Port-LockLine Cord	Red	0.5	Gray	Transparent	1/Bag	14S06HA005P-RD61
4-Pair 26 AWG RJ45/RJ45 Shielded S/FTP CAT6 LSOH Port-LockLine Cord	Red	1.0	Gray	Transparent	1/Bag	14S06HA010P-RD61
4-Pair 26 AWG RJ45/RJ45 Shielded S/FTP CAT6 LSOH Port-LockLine Cord	Red	2.0	Gray	Transparent	1/Bag	14S06HA020P-RD61
4-Pair 26 AWG RJ45/RJ45 Shielded S/FTP CAT6 LSOH Port-LockLine Cord	Red	3.0	Gray	Transparent	1/Bag	14S06HA030P-RD61
4-Pair 26 AWG RJ45/RJ45 Shielded S/FTP CAT6 LSOH Port-LockLine Cord	Red	5.0	Gray	Transparent	1/Bag	14S06HA050P-RD61
4-Pair 26 AWG RJ45/RJ45 Shielded S/FTP CAT6 LSOH Port-LockLine Cord	Red	10	Gray	Transparent	1/Bag	14S06HA100P-RD61
4-Pair 26 AWG RJ45/RJ45 Shielded S/FTP CAT6 LSOH Port-LockLine Cord	Blue	0.5	Gray	Transparent	1/Bag	14S06HA005P-BL61
4-Pair 26 AWG RJ45/RJ45 Shielded S/FTP CAT6 LSOH Port-LockLine Cord	Blue	1.0	Gray	Transparent	1/Bag	14S06HA010P-BL61
4-Pair 26 AWG RJ45/RJ45 Shielded S/FTP CAT6 LSOH Port-LockLine Cord	Blue	2.0	Gray	Transparent	1/Bag	14S06HA020P-BL61
4-Pair 26 AWG RJ45/RJ45 Shielded S/FTP CAT6 LSOH Port-LockLine Cord	Blue	3.0	Gray	Transparent	1/Bag	14S06HA030P-BL61
4-Pair 26 AWG RJ45/RJ45 Shielded S/FTP CAT6 LSOH Port-LockLine Cord	Blue	5.0	Gray	Transparent	1/Bag	14S06HA050P-BL61
4-Pair 26 AWG RJ45/RJ45 Shielded S/FTP CAT6 LSOH Port-LockLine Cord	Blue	10	Gray	Transparent	1/Bag	14S06HA100P-BL61
4-Pair 26 AWG RJ45/RJ45 Shielded S/FTP CAT6 LSOH Port-LockLine Cord	Green	0.5	Gray	Transparent	1/Bag	14S06HA005P-GN61
4-Pair 26 AWG RJ45/RJ45 Shielded S/FTP CAT6 LSOH Port-LockLine Cord	Green	1.0	Gray	Transparent	1/Bag	14S06HA010P-GN61
4-Pair 26 AWG RJ45/RJ45 Shielded S/FTP CAT6 LSOH Port-LockLine Cord	Green	2.0	Gray	Transparent	1/Bag	14S06HA020P-GN61
4-Pair 26 AWG RJ45/RJ45 Shielded S/FTP CAT6 LSOH Port-LockLine Cord	Green	3.0	Gray	Transparent	1/Bag	14S06HA030P-GN61
4-Pair 26 AWG RJ45/RJ45 Shielded S/FTP CAT6 LSOH Port-LockLine Cord	Green	5.0	Gray	Transparent	1/Bag	14S06HA050P-GN61
4-Pair 26 AWG RJ45/RJ45 Shielded S/FTP CAT6 LSOH Port-LockLine Cord	Green	10	Gray	Transparent	1/Bag	14S06HA100P-GN61
4-Pair 26 AWG RJ45/RJ45 Shielded S/FTP CAT6 LSOH Port-LockLine Cord	Purple	0.5	Gray	Transparent	1/Bag	14S06HA005P-PU61
4-Pair 26 AWG RJ45/RJ45 Shielded S/FTP CAT6 LSOH Port-LockLine Cord	Purple	1.0	Gray	Transparent	1/Bag	14S06HA010P-PU61
4-Pair 26 AWG RJ45/RJ45 Shielded S/FTP CAT6 LSOH Port-LockLine Cord	Purple	2.0	Gray	Transparent	1/Bag	14S06HA020P-PU61
4-Pair 26 AWG RJ45/RJ45 Shielded S/FTP CAT6 LSOH Port-LockLine Cord	Purple	3.0	Gray	Transparent	1/Bag	14S06HA030P-PU61
4-Pair 26 AWG RJ45/RJ45 Shielded S/FTP CAT6 LSOH Port-LockLine Cord	Purple	5.0	Gray	Transparent	1/Bag	14S06HA050P-PU61
4-Pair 26 AWG RJ45/RJ45 Shielded S/FTP CAT6 LSOH Port-LockLine Cord	Purple	10	Gray	Transparent	1/Bag	14S06HA100P-PU61
4-Pair 26 AWG RJ45/RJ45 Shielded S/FTP CAT6 LSOH Port-LockLine Cord	White	0.5	Gray	Transparent	1/Bag	14S06HA005P-WT61
4-Pair 26 AWG RJ45/RJ45 Shielded S/FTP CAT6 LSOH Port-LockLine Cord	White	1.0	Gray	Transparent	1/Bag	14S06HA010P-WT61
4-Pair 26 AWG RJ45/RJ45 Shielded S/FTP CAT6 LSOH Port-LockLine Cord	White	2.0	Gray	Transparent	1/Bag	14S06HA020P-WT61
4-Pair 26 AWG RJ45/RJ45 Shielded S/FTP CAT6 LSOH Port-LockLine Cord	White	3.0	Gray	Transparent	1/Bag	14S06HA030P-WT61
4-Pair 26 AWG RJ45/RJ45 Shielded S/FTP CAT6 LSOH Port-LockLine Cord	White	5.0	Gray	Transparent	1/Bag	14S06HA050P-WT61
4-Pair 26 AWG RJ45/RJ45 Shielded S/FTP CAT6 LSOH Port-LockLine Cord	White	10	Gray	Transparent	1/Bag	14S06HA100P-WT61

AT&T Port-LockLine Category 6A

Unshielded 100 Ohm RJ45 Port-Locking Modular Cords

Description

Unshielded RJ45/RJ45 modular cords with port-locking mechanism:	
Frequency range	1-500 MHz
Conductor	26 AWG 7x0.16 mm stranded bare copper
Insulation	PO
Color code	ANSI/TIA-568-C.2
Jacket	LS0H
Jacket color	Gray
Boot color	Black

Standard & EU Directives Conformance

- Category 6A modular cords according to ISO/IEC 11801
- Category 6A modular cords according to EN 50173
- Category 6A modular cords according to ANSI/TIA-568-C.2
- IEC 60332-1 (cable) and UL94 V-0 (plug) flame tests
- EU Directive 2011/65/EU (RoHS-2)

Mechanical Properties

Impedance	100 Ohm nom.
Pin-pair assignment	T568B
Plug contacts	50µ-Inch Gold plating
Plug housing	FR Polycarbonate
Operating temperature	-20 to +60C
Voltage rating	75 Vdc max.
Ampacity	1.0 Ampere max.
Insulation resistance	500 MegaOhm min. @500 Vdc



Ordering Information

Description	Key Color	Length m	Jacket Color	Boot Color	Packaging	P/N
4-Pair 26 AWG RJ45/RJ45 Unshielded CAT6A LS0H Port-LockLine Cord	Black	0.5	Gray	Transparent	1/Bag	14M6AHA005P-BK61
4-Pair 26 AWG RJ45/RJ45 Unshielded CAT6A LS0H Port-LockLine Cord	Black	1.0	Gray	Transparent	1/Bag	14M6AHA010P-BK61
4-Pair 26 AWG RJ45/RJ45 Unshielded CAT6A LS0H Port-LockLine Cord	Black	2.0	Gray	Transparent	1/Bag	14M6AHA020P-BK61
4-Pair 26 AWG RJ45/RJ45 Unshielded CAT6A LS0H Port-LockLine Cord	Black	3.0	Gray	Transparent	1/Bag	14M6AHA030P-BK61
4-Pair 26 AWG RJ45/RJ45 Unshielded CAT6A LS0H Port-LockLine Cord	Black	5.0	Gray	Transparent	1/Bag	14M6AHA050P-BK61
4-Pair 26 AWG RJ45/RJ45 Unshielded CAT6A LS0H Port-LockLine Cord	Black	10	Gray	Transparent	1/Bag	14M6AHA100P-BK61

Continued on page F.2.1a

AT&T Port-LockLine Category 6A

Unshielded 100 Ohm RJ45 Port-Locking Modular Cords (contd.)

Ordering Information

Description	Key Color	Length m	Jacket Color	Boot Color	Packaging	P/N
4-Pair 26 AWG RJ45/RJ45 Unshielded CAT6A LSOH Port-LockLine Cord	Orange	0.5	Gray	Transparent	1/Bag	14M6AHA005P-OR61
4-Pair 26 AWG RJ45/RJ45 Unshielded CAT6A LSOH Port-LockLine Cord	Orange	1.0	Gray	Transparent	1/Bag	14M6AHA010P-OR61
4-Pair 26 AWG RJ45/RJ45 Unshielded CAT6A LSOH Port-LockLine Cord	Orange	2.0	Gray	Transparent	1/Bag	14M6AHA020P-OR61
4-Pair 26 AWG RJ45/RJ45 Unshielded CAT6A LSOH Port-LockLine Cord	Orange	3.0	Gray	Transparent	1/Bag	14M6AHA030P-OR61
4-Pair 26 AWG RJ45/RJ45 Unshielded CAT6A LSOH Port-LockLine Cord	Orange	5.0	Gray	Transparent	1/Bag	14M6AHA050P-OR61
4-Pair 26 AWG RJ45/RJ45 Unshielded CAT6A LSOH Port-LockLine Cord	Orange	10	Gray	Transparent	1/Bag	14M6AHA100P-OR61
4-Pair 26 AWG RJ45/RJ45 Unshielded CAT6A LSOH Port-LockLine Cord	Yellow	0.5	Gray	Transparent	1/Bag	14M6AHA005P-YL61
4-Pair 26 AWG RJ45/RJ45 Unshielded CAT6A LSOH Port-LockLine Cord	Yellow	1.0	Gray	Transparent	1/Bag	14M6AHA010P-YL61
4-Pair 26 AWG RJ45/RJ45 Unshielded CAT6A LSOH Port-LockLine Cord	Yellow	2.0	Gray	Transparent	1/Bag	14M6AHA020P-YL61
4-Pair 26 AWG RJ45/RJ45 Unshielded CAT6A LSOH Port-LockLine Cord	Yellow	3.0	Gray	Transparent	1/Bag	14M6AHA030P-YL61
4-Pair 26 AWG RJ45/RJ45 Unshielded CAT6A LSOH Port-LockLine Cord	Yellow	5.0	Gray	Transparent	1/Bag	14M6AHA050P-YL61
4-Pair 26 AWG RJ45/RJ45 Unshielded CAT6A LSOH Port-LockLine Cord	Yellow	10	Gray	Transparent	1/Bag	14M6AHA100P-YL61
4-Pair 26 AWG RJ45/RJ45 Unshielded CAT6A LSOH Port-LockLine Cord	Red	0.5	Gray	Transparent	1/Bag	14M6AHA005P-RD61
4-Pair 26 AWG RJ45/RJ45 Unshielded CAT6A LSOH Port-LockLine Cord	Red	1.0	Gray	Transparent	1/Bag	14M6AHA010P-RD61
4-Pair 26 AWG RJ45/RJ45 Unshielded CAT6A LSOH Port-LockLine Cord	Red	2.0	Gray	Transparent	1/Bag	14M6AHA020P-RD61
4-Pair 26 AWG RJ45/RJ45 Unshielded CAT6A LSOH Port-LockLine Cord	Red	3.0	Gray	Transparent	1/Bag	14M6AHA030P-RD61
4-Pair 26 AWG RJ45/RJ45 Unshielded CAT6A LSOH Port-LockLine Cord	Red	5.0	Gray	Transparent	1/Bag	14M6AHA050P-RD61
4-Pair 26 AWG RJ45/RJ45 Unshielded CAT6A LSOH Port-LockLine Cord	Red	10	Gray	Transparent	1/Bag	14M6AHA100P-RD61
4-Pair 26 AWG RJ45/RJ45 Unshielded CAT6A LSOH Port-LockLine Cord	Blue	0.5	Gray	Transparent	1/Bag	14M6AHA005P-BL61
4-Pair 26 AWG RJ45/RJ45 Unshielded CAT6A LSOH Port-LockLine Cord	Blue	1.0	Gray	Transparent	1/Bag	14M6AHA010P-BL61
4-Pair 26 AWG RJ45/RJ45 Unshielded CAT6A LSOH Port-LockLine Cord	Blue	2.0	Gray	Transparent	1/Bag	14M6AHA020P-BL61
4-Pair 26 AWG RJ45/RJ45 Unshielded CAT6A LSOH Port-LockLine Cord	Blue	3.0	Gray	Transparent	1/Bag	14M6AHA030P-BL61
4-Pair 26 AWG RJ45/RJ45 Unshielded CAT6A LSOH Port-LockLine Cord	Blue	5.0	Gray	Transparent	1/Bag	14M6AHA050P-BL61
4-Pair 26 AWG RJ45/RJ45 Unshielded CAT6A LSOH Port-LockLine Cord	Blue	10	Gray	Transparent	1/Bag	14M6AHA100P-BL61
4-Pair 26 AWG RJ45/RJ45 Unshielded CAT6A LSOH Port-LockLine Cord	Green	0.5	Gray	Transparent	1/Bag	14M6AHA005P-GN61
4-Pair 26 AWG RJ45/RJ45 Unshielded CAT6A LSOH Port-LockLine Cord	Green	1.0	Gray	Transparent	1/Bag	14M6AHA010P-GN61
4-Pair 26 AWG RJ45/RJ45 Unshielded CAT6A LSOH Port-LockLine Cord	Green	2.0	Gray	Transparent	1/Bag	14M6AHA020P-GN61
4-Pair 26 AWG RJ45/RJ45 Unshielded CAT6A LSOH Port-LockLine Cord	Green	3.0	Gray	Transparent	1/Bag	14M6AHA030P-GN61
4-Pair 26 AWG RJ45/RJ45 Unshielded CAT6A LSOH Port-LockLine Cord	Green	5.0	Gray	Transparent	1/Bag	14M6AHA050P-GN61
4-Pair 26 AWG RJ45/RJ45 Unshielded CAT6A LSOH Port-LockLine Cord	Green	10	Gray	Transparent	1/Bag	14M6AHA100P-GN61
4-Pair 26 AWG RJ45/RJ45 Unshielded CAT6A LSOH Port-LockLine Cord	Purple	0.5	Gray	Transparent	1/Bag	14M6AHA005P-PU61
4-Pair 26 AWG RJ45/RJ45 Unshielded CAT6A LSOH Port-LockLine Cord	Purple	1.0	Gray	Transparent	1/Bag	14M6AHA010P-PU61
4-Pair 26 AWG RJ45/RJ45 Unshielded CAT6A LSOH Port-LockLine Cord	Purple	2.0	Gray	Transparent	1/Bag	14M6AHA020P-PU61
4-Pair 26 AWG RJ45/RJ45 Unshielded CAT6A LSOH Port-LockLine Cord	Purple	3.0	Gray	Transparent	1/Bag	14M6AHA030P-PU61
4-Pair 26 AWG RJ45/RJ45 Unshielded CAT6A LSOH Port-LockLine Cord	Purple	5.0	Gray	Transparent	1/Bag	14M6AHA050P-PU61
4-Pair 26 AWG RJ45/RJ45 Unshielded CAT6A LSOH Port-LockLine Cord	Purple	10	Gray	Transparent	1/Bag	14M6AHA100P-PU61
4-Pair 24 AWG RJ45/RJ45 Unshielded CAT6A LSOH Port-LockLine Cord	White	0.5	Gray	Transparent	1/Bag	14M6AHA005P-WT61
4-Pair 24 AWG RJ45/RJ45 Unshielded CAT6A LSOH Port-LockLine Cord	White	1.0	Gray	Transparent	1/Bag	14M6AHA010P-WT61
4-Pair 24 AWG RJ45/RJ45 Unshielded CAT6A LSOH Port-LockLine Cord	White	2.0	Gray	Transparent	1/Bag	14M6AHA020P-WT61
4-Pair 24 AWG RJ45/RJ45 Unshielded CAT6A LSOH Port-LockLine Cord	White	3.0	Gray	Transparent	1/Bag	14M6AHA030P-WT61
4-Pair 24 AWG RJ45/RJ45 Unshielded CAT6A LSOH Port-LockLine Cord	White	5.0	Gray	Transparent	1/Bag	14M6AHA050P-WT61
4-Pair 24 AWG RJ45/RJ45 Unshielded CAT6A LSOH Port-LockLine Cord	White	10	Gray	Transparent	1/Bag	14M6AHA100P-WT61

AT&T Port-LockLine Category 6A

Shielded 100 Ohm RJ45 Port Locking Modular Cords

Description

Shielded RJ45/RJ45 S/FTP modular cords with port-locking mechanism:

Frequency range	1-500 MHz
Conductor	26 AWG 7x0.16 mm stranded bare copper
Insulation	PO
Color code	ANSI/TIA-568-C.2
Individual pair shield	Aluminum foil
Overall shield	Tin-coated copper braid
Jacket	LSOH
Jacket color	Gray
Boot color	Black

Standard & EU Directives Conformance

- Category 6A modular cords according to ISO/IEC 11801
- Category 6A modular cords according to EN 50173
- Category 6A modular cords according to ANSI/TIA-568-C.2
- IEC 60332-1 (cable) and UL94 V-0 (plug) flame tests
- EU Directive 2011/65/EU (RoHS-2)

Mechanical Properties

Impedance	100 Ohm nom.
Pin-pair assignment	T568B
Plug contacts	50µ-Inch Gold plating
Plug shield	Corrosion resistant metal
Plug housing	FR Polycarbonate
Operating temperature	-20 to +60C
Voltage rating	75 Vdc max.
Ampacity	1.0 Ampere max.
Insulation resistance	500 MegaOhm min. @500 Vdc



Ordering Information

Description	Key Color	Length m	Jacket Color	Boot Color	Packaging	P/N
4-Pair 26 AWG RJ45/RJ45 Shielded S/FTP CAT6A LSOH Port-LockLine Cord	Black	0.5	Gray	Transparent	1/Bag	14S6AHA005P-BK61
4-Pair 26 AWG RJ45/RJ45 Shielded S/FTP CAT6A LSOH Port-LockLine Cord	Black	1.0	Gray	Transparent	1/Bag	14S6AHA010P-BK61
4-Pair 26 AWG RJ45/RJ45 Shielded S/FTP CAT6A LSOH Port-LockLine Cord	Black	2.0	Gray	Transparent	1/Bag	14S6AHA020P-BK61
4-Pair 26 AWG RJ45/RJ45 Shielded S/FTP CAT6A LSOH Port-LockLine Cord	Black	3.0	Gray	Transparent	1/Bag	14S6AHA030P-BK61
4-Pair 26 AWG RJ45/RJ45 Shielded S/FTP CAT6A LSOH Port-LockLine Cord	Black	5.0	Gray	Transparent	1/Bag	14S6AHA050P-BK61
4-Pair 26 AWG RJ45/RJ45 Shielded S/FTP CAT6A LSOH Port-LockLine Cord	Black	10	Gray	Transparent	1/Bag	14S6AHA100P-BK61

Continued on page F.2.2a

AT&T Port-LockLine Category 6A

Shielded 100 Ohm RJ45 Port Locking Modular Cords (contd.)

Ordering Information

Description	Key Color	Length m	Jacket Color	Boot Color	Packaging	P/N
4-Pair 26 AWG RJ45/RJ45 Shielded S/FTP CAT6A LS0H Port-LockLine Cord	Orange	0.5	Gray	Transparent	1/Bag	14S6AHA005P-OR61
4-Pair 26 AWG RJ45/RJ45 Shielded S/FTP CAT6A LS0H Port-LockLine Cord	Orange	1.0	Gray	Transparent	1/Bag	14S6AHA010P-OR61
4-Pair 26 AWG RJ45/RJ45 Shielded S/FTP CAT6A LS0H Port-LockLine Cord	Orange	2.0	Gray	Transparent	1/Bag	14S6AHA020P-OR61
4-Pair 26 AWG RJ45/RJ45 Shielded S/FTP CAT6A LS0H Port-LockLine Cord	Orange	3.0	Gray	Transparent	1/Bag	14S6AHA030P-OR61
4-Pair 26 AWG RJ45/RJ45 Shielded S/FTP CAT6A LS0H Port-LockLine Cord	Orange	5.0	Gray	Transparent	1/Bag	14S6AHA050P-OR61
4-Pair 26 AWG RJ45/RJ45 Shielded S/FTP CAT6A LS0H Port-LockLine Cord	Orange	10	Gray	Transparent	1/Bag	14S6AHA100P-OR61
4-Pair 26 AWG RJ45/RJ45 Shielded S/FTP CAT6A LS0H Port-LockLine Cord	Yellow	0.5	Gray	Transparent	1/Bag	14S6AHA005P-YL61
4-Pair 26 AWG RJ45/RJ45 Shielded S/FTP CAT6A LS0H Port-LockLine Cord	Yellow	1.0	Gray	Transparent	1/Bag	14S6AHA010P-YL61
4-Pair 26 AWG RJ45/RJ45 Shielded S/FTP CAT6A LS0H Port-LockLine Cord	Yellow	2.0	Gray	Transparent	1/Bag	14S6AHA020P-YL61
4-Pair 26 AWG RJ45/RJ45 Shielded S/FTP CAT6A LS0H Port-LockLine Cord	Yellow	3.0	Gray	Transparent	1/Bag	14S6AHA030P-YL61
4-Pair 26 AWG RJ45/RJ45 Shielded S/FTP CAT6A LS0H Port-LockLine Cord	Yellow	5.0	Gray	Transparent	1/Bag	14S6AHA050P-YL61
4-Pair 26 AWG RJ45/RJ45 Shielded S/FTP CAT6A LS0H Port-LockLine Cord	Yellow	10	Gray	Transparent	1/Bag	14S6AHA100P-YL61
4-Pair 26 AWG RJ45/RJ45 Shielded S/FTP CAT6A LS0H Port-LockLine Cord	Red	0.5	Gray	Transparent	1/Bag	14S6AHA005P-RD61
4-Pair 26 AWG RJ45/RJ45 Shielded S/FTP CAT6A LS0H Port-LockLine Cord	Red	1.0	Gray	Transparent	1/Bag	14S6AHA010P-RD61
4-Pair 26 AWG RJ45/RJ45 Shielded S/FTP CAT6A LS0H Port-LockLine Cord	Red	2.0	Gray	Transparent	1/Bag	14S6AHA020P-RD61
4-Pair 26 AWG RJ45/RJ45 Shielded S/FTP CAT6A LS0H Port-LockLine Cord	Red	3.0	Gray	Transparent	1/Bag	14S6AHA030P-RD61
4-Pair 26 AWG RJ45/RJ45 Shielded S/FTP CAT6A LS0H Port-LockLine Cord	Red	5.0	Gray	Transparent	1/Bag	14S6AHA050P-RD61
4-Pair 26 AWG RJ45/RJ45 Shielded S/FTP CAT6A LS0H Port-LockLine Cord	Red	10	Gray	Transparent	1/Bag	14S6AHA100P-RD61
4-Pair 26 AWG RJ45/RJ45 Shielded S/FTP CAT6A LS0H Port-LockLine Cord	Blue	0.5	Gray	Transparent	1/Bag	14S6AHA005P-BL61
4-Pair 26 AWG RJ45/RJ45 Shielded S/FTP CAT6A LS0H Port-LockLine Cord	Blue	1.0	Gray	Transparent	1/Bag	14S6AHA010P-BL61
4-Pair 26 AWG RJ45/RJ45 Shielded S/FTP CAT6A LS0H Port-LockLine Cord	Blue	2.0	Gray	Transparent	1/Bag	14S6AHA020P-BL61
4-Pair 26 AWG RJ45/RJ45 Shielded S/FTP CAT6A LS0H Port-LockLine Cord	Blue	3.0	Gray	Transparent	1/Bag	14S6AHA030P-BL61
4-Pair 26 AWG RJ45/RJ45 Shielded S/FTP CAT6A LS0H Port-LockLine Cord	Blue	5.0	Gray	Transparent	1/Bag	14S6AHA050P-BL61
4-Pair 26 AWG RJ45/RJ45 Shielded S/FTP CAT6A LS0H Port-LockLine Cord	Blue	10	Gray	Transparent	1/Bag	14S6AHA100P-BL61
4-Pair 26 AWG RJ45/RJ45 Shielded S/FTP CAT6A LS0H Port-LockLine Cord	Green	0.5	Gray	Transparent	1/Bag	14S6AHA005P-GN61
4-Pair 26 AWG RJ45/RJ45 Shielded S/FTP CAT6A LS0H Port-LockLine Cord	Green	1.0	Gray	Transparent	1/Bag	14S6AHA010P-GN61
4-Pair 26 AWG RJ45/RJ45 Shielded S/FTP CAT6A LS0H Port-LockLine Cord	Green	2.0	Gray	Transparent	1/Bag	14S6AHA020P-GN61
4-Pair 26 AWG RJ45/RJ45 Shielded S/FTP CAT6A LS0H Port-LockLine Cord	Green	3.0	Gray	Transparent	1/Bag	14S6AHA030P-GN61
4-Pair 26 AWG RJ45/RJ45 Shielded S/FTP CAT6A LS0H Port-LockLine Cord	Green	5.0	Gray	Transparent	1/Bag	14S6AHA050P-GN61
4-Pair 26 AWG RJ45/RJ45 Shielded S/FTP CAT6A LS0H Port-LockLine Cord	Green	10	Gray	Transparent	1/Bag	14S6AHA100P-GN61
4-Pair 26 AWG RJ45/RJ45 Shielded S/FTP CAT6A LS0H Port-LockLine Cord	Purple	0.5	Gray	Transparent	1/Bag	14S6AHA005P-PU61
4-Pair 26 AWG RJ45/RJ45 Shielded S/FTP CAT6A LS0H Port-LockLine Cord	Purple	1.0	Gray	Transparent	1/Bag	14S6AHA010P-PU61
4-Pair 26 AWG RJ45/RJ45 Shielded S/FTP CAT6A LS0H Port-LockLine Cord	Purple	2.0	Gray	Transparent	1/Bag	14S6AHA020P-PU61
4-Pair 26 AWG RJ45/RJ45 Shielded S/FTP CAT6A LS0H Port-LockLine Cord	Purple	3.0	Gray	Transparent	1/Bag	14S6AHA030P-PU61
4-Pair 26 AWG RJ45/RJ45 Shielded S/FTP CAT6A LS0H Port-LockLine Cord	Purple	5.0	Gray	Transparent	1/Bag	14S6AHA050P-PU61
4-Pair 26 AWG RJ45/RJ45 Shielded S/FTP CAT6A LS0H Port-LockLine Cord	Purple	10	Gray	Transparent	1/Bag	14S6AHA100P-PU61
4-Pair 26 AWG RJ45/RJ45 Shielded S/FTP CAT6A LS0H Port-LockLine Cord	White	0.5	Gray	Transparent	1/Bag	14S6AHA005P-WT61
4-Pair 26 AWG RJ45/RJ45 Shielded S/FTP CAT6A LS0H Port-LockLine Cord	White	1.0	Gray	Transparent	1/Bag	14S6AHA010P-WT61
4-Pair 26 AWG RJ45/RJ45 Shielded S/FTP CAT6A LS0H Port-LockLine Cord	White	2.0	Gray	Transparent	1/Bag	14S6AHA020P-WT61
4-Pair 26 AWG RJ45/RJ45 Shielded S/FTP CAT6A LS0H Port-LockLine Cord	White	3.0	Gray	Transparent	1/Bag	14S6AHA030P-WT61
4-Pair 26 AWG RJ45/RJ45 Shielded S/FTP CAT6A LS0H Port-LockLine Cord	White	5.0	Gray	Transparent	1/Bag	14S6AHA050P-WT61
4-Pair 26 AWG RJ45/RJ45 Shielded S/FTP CAT6A LS0H Port-LockLine Cord	White	10	Gray	Transparent	1/Bag	14S6AHA100P-WT61

AT&T Port-LockLine

RJ45 Universal Port Locking Plugs

Description

RJ45 plugs with color-coded locking mechanism:
 RJ45 port-locking plugs compatible with all RJ45 jacks.
 The color-coded plugs can be extracted only with matching colored extraction keys.

Jack type	Compatible with all RJ45 jacks
Category	Compatible with all categories
Construction material	Flame retardant plastic material

Standard & EU Directives Conformance

- UL 94V-0 flame test
- EU Directive 2011/65/EU (RoHS-2)

Mechanical Properties

Operating temperature	-20 to +70C
Optional colors	See ordering information.



Ordering Information

Description	Key Color	Packaging	P/N
RJ45 Port-LockLine Universal Port Blocker	Black	50/Bag	53LCPNVRJ1P-BK6A
RJ45 Port-LockLine Universal Port Blocker	Green	50/Bag	53LCPNVRJ1P-GN6A
RJ45 Port-LockLine Universal Port Blocker	Blue	50/Bag	53LCPNVRJ1P-BL6A
RJ45 Port-LockLine Universal Port Blocker	Orange	50/Bag	53LCPNVRJ1P-OR6A
RJ45 Port-LockLine Universal Port Blocker	Red	50/Bag	53LCPNVRJ1P-RD6A
RJ45 Port-LockLine Universal Port Blocker	Yellow	50/Bag	53LCPNVRJ1P-YL6A
RJ45 Port-LockLine Universal Port Blocker	Purple	50/Bag	53LCPNVRJ1P-PU6A
RJ45 Port-LockLine Universal Port Blocker	White	50/Bag	53LCPNVRJ1P-WT6A

AT&T Port-LockLine

RJ45 Universal Extraction Keys

Description

RJ45 color-coded extraction keys:
Extraction keys for all RJ45 modular cords and RJ45 port-locking plugs.
The color-coded keys fit only matching colored cords and plugs.

Cord type	Compatible with all RJ45 cord types
Plug type	Compatible with all RJ45 plug types
Construction material	Flame retardant plastic material

Standard & EU Directives Conformance

- UL 94V-0 flame test
- EU Directive 2011/65/EU (RoHS-2)

Mechanical Properties

Operating temperature	-20 to +70C
Optional colors	See ordering information.



Ordering Information

Description	Key Color	Packaging	P/N
RJ45 Port-LockLine Extraction Key	Black	50/Bag	53LCPNVRJ1K-BK6A
RJ45 Port-LockLine Extraction Key	Green	50/Bag	53LCPNVRJ1K-GN6A
RJ45 Port-LockLine Extraction Key	Blue	50/Bag	53LCPNVRJ1K-BL6A
RJ45 Port-LockLine Extraction Key	Orange	50/Bag	53LCPNVRJ1K-OR6A
RJ45 Port-LockLine Extraction Key	Red	50/Bag	53LCPNVRJ1K-RD6A
RJ45 Port-LockLine Extraction Key	Yellow	50/Bag	53LCPNVRJ1K-YL6A
RJ45 Port-LockLine Extraction Key	Purple	50/Bag	53LCPNVRJ1K-PU6A
RJ45 Port-LockLine Extraction Key	White	50/Bag	53LCPNVRJ1K-WT6A
RJ45 Port-LockLine Extraction Key - Administrator	Not specified	50/Bag	53LCPNVRJ1K-AD6A

AT&T Port-LockLine

Compatible CopperLine Products

CopperLine Panels

P/N	Description
13X00NV024Y-ZZ1U	24 Port Unshielded or Shielded 19" Snap-in Blank Patch Panel,1U

13X00NV024Y-ZZ1U



CopperLine Faceplates

P/N	Description
16A00NV00XA-WT61	US Style Faceplate

16A00NV00XA-WT61

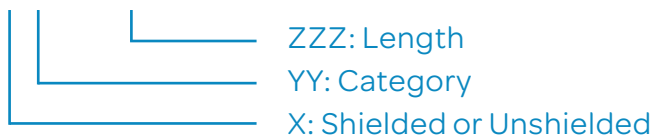


AT&T Port-LockLine

CopperLine - Pre-Terminated Cassettes

P/N	Description
13U00NV024P-BK51	24-Port Unshielded Blank 19" Panel for 4 Pre-Terminated Cassettes
32XYYHAZZZC-BK61	6-Port Unshielded CAT5e Plug & Play RJ45 Cassette to Cassette

32XYYHAZZZC-BK61



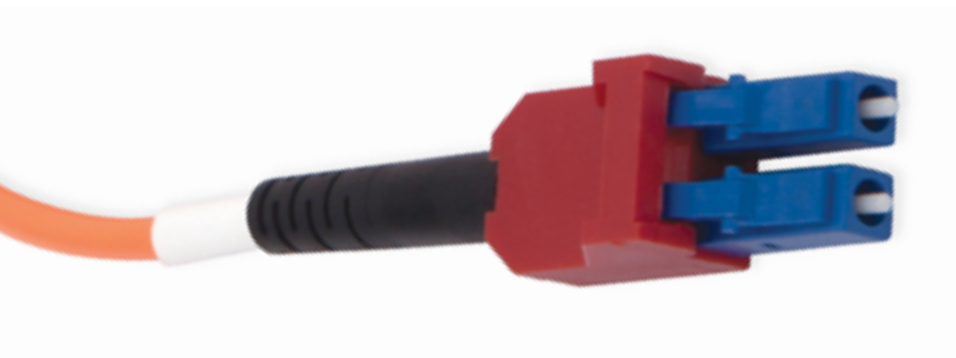
AT&T Cabling Systems

Port-LockLine Fiber Optic Solutions

Secure LAN Fiber-Optic End-to-End Solutions

Modular Cords, Blockers & Extraction Tools

- Port-LockLine SC Simplex
- Port-LockLine LC Duplex



AT&T Port-LockLine

Fiber Optic SC/UPC Simplex Multimode Port-Locking Cords

Description

Fiber-optic modular cords with color-coded locking mechanism: Simplex Multimode Cords made with multimode fibers and terminated with SC/UPC connectors.

Additional combinations can be selected using the information on page B.3.

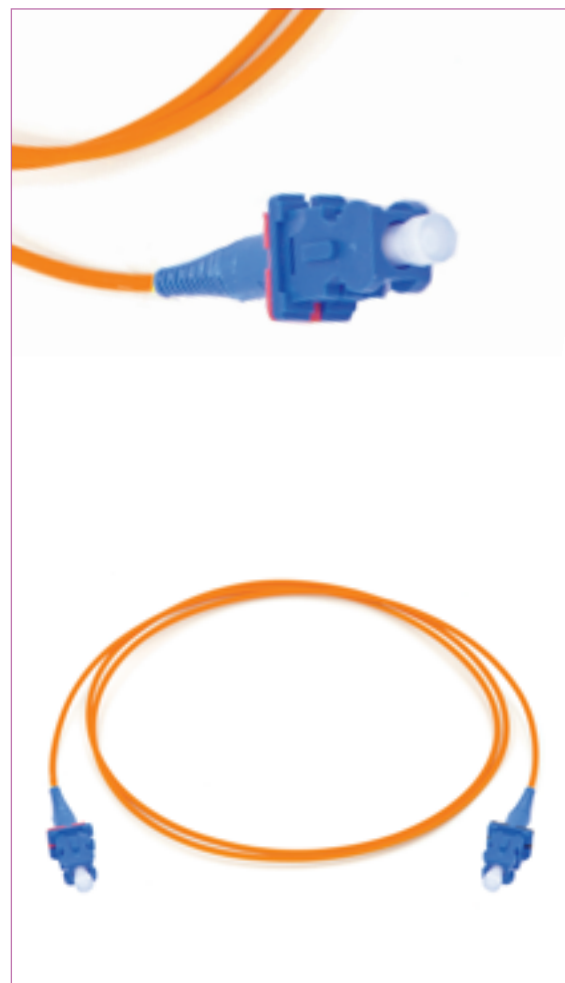
Fiber type	Select a multimode fiber from page B.6.
Buffer type	900µ tight flame retardant LSOH coating
Strength elements	Served aramid and glass yarn
Minicable jacket material	Flame retardant LSOH compound

Standard & EU Directives Conformance

- Relevant sections of ANSI/TIA-568-C.3
- Relevant sections of ISO/IEC 11801
- Relevant sections of EN 50173
- Relevant sections of ANSI/TIA/EIA-604 (FOCIS)
- Relevant sections of IEC 60874
- Relevant sections of IEC 61753
- Relevant sections of IEC 61754
- IEC 60332-1 flame test
- IEC 60754 & IEC 61034
- EU Directive 2011/65/EU (RoHS-2)

Mechanical Properties

Short term bend radius	20xOD mm
Long term bend radius	10xOD mm
Operating temperature	-20 to +70C
Jacket color	MM OM1 & OM2: Orange MM OM3: Turquoise MM OM4: Purple



Ordering Information

FF: Fiber Type

Description	Key Color	Length m	Cable OD mm	Packaging	P/N
SC/UPC-SC/UPC Simplex MultimodeLS0H Port-LockLine Cord	Black	0.5	3.0	1/Bag - 12/Box	28CFFHH005P-BK61
SC/UPC-SC/UPC Simplex MultimodeLS0H Port-LockLine Cord	Black	1.0	3.0	1/Bag - 12/Box	28CFFHH010P-BK61
SC/UPC-SC/UPC Simplex MultimodeLS0H Port-LockLine Cord	Black	2.0	3.0	1/Bag - 12/Box	28CFFHH020P-BK61
SC/UPC-SC/UPC Simplex MultimodeLS0H Port-LockLine Cord	Black	3.0	3.0	1/Bag - 12/Box	28CFFHH030P-BK61
SC/UPC-SC/UPC Simplex MultimodeLS0H Port-LockLine Cord	Black	5.0	3.0	1/Bag - 12/Box	28CFFHH050P-BK61
SC/UPC-SC/UPC Simplex MultimodeLS0H Port-LockLine Cord	Black	10	3.0	1/Bag - 12/Box	28CFFHH100P-BK61
SC/UPC-SC/UPC Simplex MultimodeLS0H Port-LockLine Cord	Black	20	3.0	1/Bag - 12/Box	28CFFHH200P-BK61
SC/UPC-SC/UPC Simplex MultimodeLS0H Port-LockLine Cord	White	0.5	3.0	1/Bag - 12/Box	28CFFHH005P-WT61
SC/UPC-SC/UPC Simplex MultimodeLS0H Port-LockLine Cord	White	1.0	3.0	1/Bag - 12/Box	28CFFHH010P-WT61
SC/UPC-SC/UPC Simplex MultimodeLS0H Port-LockLine Cord	White	2.0	3.0	1/Bag - 12/Box	28CFFHH020P-WT61
SC/UPC-SC/UPC Simplex MultimodeLS0H Port-LockLine Cord	White	3.0	3.0	1/Bag - 12/Box	28CFFHH030P-WT61
SC/UPC-SC/UPC Simplex MultimodeLS0H Port-LockLine Cord	White	5.0	3.0	1/Bag - 12/Box	28CFFHH050P-WT61
SC/UPC-SC/UPC Simplex MultimodeLS0H Port-LockLine Cord	White	10	3.0	1/Bag - 12/Box	28CFFHH100P-WT61
SC/UPC-SC/UPC Simplex MultimodeLS0H Port-LockLine Cord	White	20	3.0	1/Bag - 12/Box	28CFFHH200P-WT61
SC/UPC-SC/UPC Simplex MultimodeLS0H Port-LockLine Cord	Red	0.5	3.0	1/Bag - 12/Box	28CFFHH005P-RD61
SC/UPC-SC/UPC Simplex MultimodeLS0H Port-LockLine Cord	Red	1.0	3.0	1/Bag - 12/Box	28CFFHH010P-RD61
SC/UPC-SC/UPC Simplex MultimodeLS0H Port-LockLine Cord	Red	2.0	3.0	1/Bag - 12/Box	28CFFHH020P-RD61
SC/UPC-SC/UPC Simplex MultimodeLS0H Port-LockLine Cord	Red	3.0	3.0	1/Bag - 12/Box	28CFFHH030P-RD61
SC/UPC-SC/UPC Simplex MultimodeLS0H Port-LockLine Cord	Red	5.0	3.0	1/Bag - 12/Box	28CFFHH050P-RD61
SC/UPC-SC/UPC Simplex MultimodeLS0H Port-LockLine Cord	Red	10	3.0	1/Bag - 12/Box	28CFFHH100P-RD61
SC/UPC-SC/UPC Simplex MultimodeLS0H Port-LockLine Cord	Red	20	3.0	1/Bag - 12/Box	28CFFHH200P-RD61
SC/UPC-SC/UPC Simplex MultimodeLS0H Port-LockLine Cord	Yellow	0.5	3.0	1/Bag - 12/Box	28CFFHH005P-YL61
SC/UPC-SC/UPC Simplex MultimodeLS0H Port-LockLine Cord	Yellow	1.0	3.0	1/Bag - 12/Box	28CFFHH010P-YL61
SC/UPC-SC/UPC Simplex MultimodeLS0H Port-LockLine Cord	Yellow	2.0	3.0	1/Bag - 12/Box	28CFFHH020P-YL61
SC/UPC-SC/UPC Simplex MultimodeLS0H Port-LockLine Cord	Yellow	3.0	3.0	1/Bag - 12/Box	28CFFHH030P-YL61
SC/UPC-SC/UPC Simplex MultimodeLS0H Port-LockLine Cord	Yellow	5.0	3.0	1/Bag - 12/Box	28CFFHH050P-YL61
SC/UPC-SC/UPC Simplex MultimodeLS0H Port-LockLine Cord	Yellow	10	3.0	1/Bag - 12/Box	28CFFHH100P-YL61
SC/UPC-SC/UPC Simplex MultimodeLS0H Port-LockLine Cord	Yellow	20	3.0	1/Bag - 12/Box	28CFFHH200P-YL61

AT&T Port-LockLine

Fiber Optic SC/UPC Simplex Singlemode Port-Locking Cords

Description

Fiber-optic modular cords with color-coded locking mechanism: Simplex Singlemode Cords made with singlemode fibers and terminated with SC/UPC connectors.

Additional combinations can be selected using the information on page B.3.

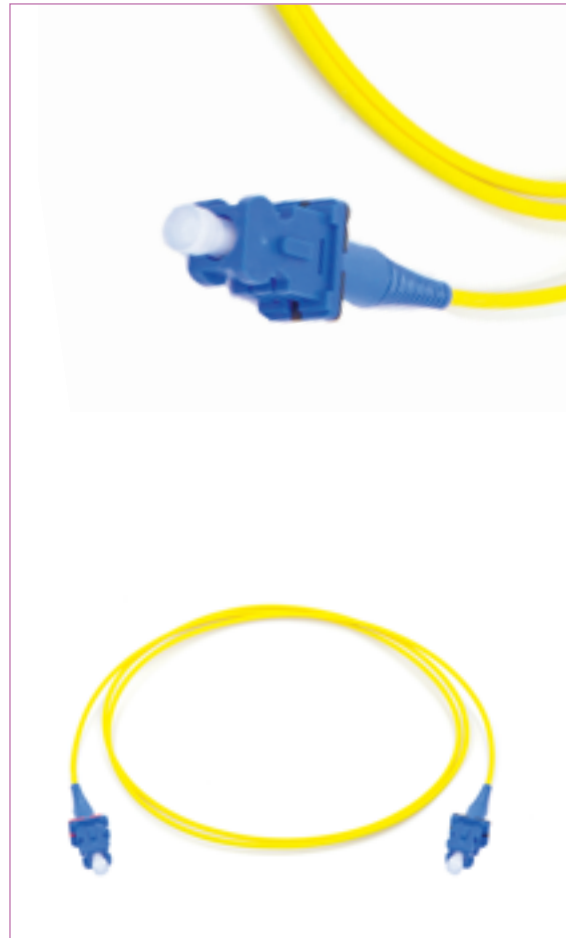
Fiber type	Select a singlemode fiber from page B.6.
Buffer type	900µ tight flame retardant LSOH coating
Strength elements	Served aramid and glass yarn
Minicable jacket material	Flame retardant LSOH compound

Standard & EU Directives Conformance

- Relevant sections of ANSI/TIA-568-C.3
- Relevant sections of ISO/IEC 11801
- Relevant sections of EN 50173
- Relevant sections of ANSI/TIA/EIA-604 (FOCIS)
- Relevant sections of IEC 60874
- Relevant sections of IEC 61753
- Relevant sections of IEC 61754
- IEC 60332-1 flame test
- IEC 60754 & IEC 61034
- EU Directive 2011/65/EU (RoHS-2)

Mechanical Properties

Short term bend radius	20xOD mm
Long term bend radius	10xOD mm
Operating temperature	-20 to +70C
Jacket color	Yellow



Ordering Information

FF: Fiber Type

Description	Key Color	Length m	Cable OD mm	Packaging	P/N
SC/UPC-SC/UPC Simplex Singlemode LSOH Port-LockLine Cord	Black	0.5	3.0	1/Bag - 12/Box	28CFFJJ005P-BK61
SC/UPC-SC/UPC Simplex Singlemode LSOH Port-LockLine Cord	Black	1.0	3.0	1/Bag - 12/Box	28CFFJJ010P-BK61
SC/UPC-SC/UPC Simplex Singlemode LSOH Port-LockLine Cord	Black	2.0	3.0	1/Bag - 12/Box	28CFFJJ020P-BK61
SC/UPC-SC/UPC Simplex Singlemode LSOH Port-LockLine Cord	Black	3.0	3.0	1/Bag - 12/Box	28CFFJJ030P-BK61
SC/UPC-SC/UPC Simplex Singlemode LSOH Port-LockLine Cord	Black	5.0	3.0	1/Bag - 12/Box	28CFFJJ050P-BK61
SC/UPC-SC/UPC Simplex Singlemode LSOH Port-LockLine Cord	Black	10	3.0	1/Bag - 12/Box	28CFFJJ100P-BK61
SC/UPC-SC/UPC Simplex Singlemode LSOH Port-LockLine Cord	Black	20	3.0	1/Bag - 12/Box	28CFFJJ200P-BK61
SC/UPC-SC/UPC Simplex Singlemode LSOH Port-LockLine Cord	White	0.5	3.0	1/Bag - 12/Box	28CFFJJ005P-WT61
SC/UPC-SC/UPC Simplex Singlemode LSOH Port-LockLine Cord	White	1.0	3.0	1/Bag - 12/Box	28CFFJJ010P-WT61
SC/UPC-SC/UPC Simplex Singlemode LSOH Port-LockLine Cord	White	2.0	3.0	1/Bag - 12/Box	28CFFJJ020P-WT61
SC/UPC-SC/UPC Simplex Singlemode LSOH Port-LockLine Cord	White	3.0	3.0	1/Bag - 12/Box	28CFFJJ030P-WT61
SC/UPC-SC/UPC Simplex Singlemode LSOH Port-LockLine Cord	White	5.0	3.0	1/Bag - 12/Box	28CFFJJ050P-WT61
SC/UPC-SC/UPC Simplex Singlemode LSOH Port-LockLine Cord	White	10	3.0	1/Bag - 12/Box	28CFFJJ100P-WT61
SC/UPC-SC/UPC Simplex Singlemode LSOH Port-LockLine Cord	White	20	3.0	1/Bag - 12/Box	28CFFJJ200P-WT61
SC/UPC-SC/UPC Simplex Singlemode LSOH Port-LockLine Cord	Red	0.5	3.0	1/Bag - 12/Box	28CFFJJ005P-RD61
SC/UPC-SC/UPC Simplex Singlemode LSOH Port-LockLine Cord	Red	1.0	3.0	1/Bag - 12/Box	28CFFJJ010P-RD61
SC/UPC-SC/UPC Simplex Singlemode LSOH Port-LockLine Cord	Red	2.0	3.0	1/Bag - 12/Box	28CFFJJ020P-RD61
SC/UPC-SC/UPC Simplex Singlemode LSOH Port-LockLine Cord	Red	3.0	3.0	1/Bag - 12/Box	28CFFJJ030P-RD61
SC/UPC-SC/UPC Simplex Singlemode LSOH Port-LockLine Cord	Red	5.0	3.0	1/Bag - 12/Box	28CFFJJ050P-RD61
SC/UPC-SC/UPC Simplex Singlemode LSOH Port-LockLine Cord	Red	10	3.0	1/Bag - 12/Box	28CFFJJ100P-RD61
SC/UPC-SC/UPC Simplex Singlemode LSOH Port-LockLine Cord	Red	20	3.0	1/Bag - 12/Box	28CFFJJ200P-RD61
SC/UPC-SC/UPC Simplex Singlemode LSOH Port-LockLine Cord	Yellow	0.5	3.0	1/Bag - 12/Box	28CFFJJ005P-YL61
SC/UPC-SC/UPC Simplex Singlemode LSOH Port-LockLine Cord	Yellow	1.0	3.0	1/Bag - 12/Box	28CFFJJ010P-YL61
SC/UPC-SC/UPC Simplex Singlemode LSOH Port-LockLine Cord	Yellow	2.0	3.0	1/Bag - 12/Box	28CFFJJ020P-YL61
SC/UPC-SC/UPC Simplex Singlemode LSOH Port-LockLine Cord	Yellow	3.0	3.0	1/Bag - 12/Box	28CFFJJ030P-YL61
SC/UPC-SC/UPC Simplex Singlemode LSOH Port-LockLine Cord	Yellow	5.0	3.0	1/Bag - 12/Box	28CFFJJ050P-YL61
SC/UPC-SC/UPC Simplex Singlemode LSOH Port-LockLine Cord	Yellow	10	3.0	1/Bag - 12/Box	28CFFJJ100P-YL61
SC/UPC-SC/UPC Simplex Singlemode LSOH Port-LockLine Cord	Yellow	20	3.0	1/Bag - 12/Box	28CFFJJ200P-YL61

AT&T Port-LockLine

Fiber Optic SC/APC Simplex Singlemode Port-Locking Cords

Description

Fiber-optic modular cords with color-coded locking mechanism:
 Simplex Singlemode Cords made with singlemode fibers and terminated with SC/APC connectors.
 Additional combinations can be selected using the information on page B.3.

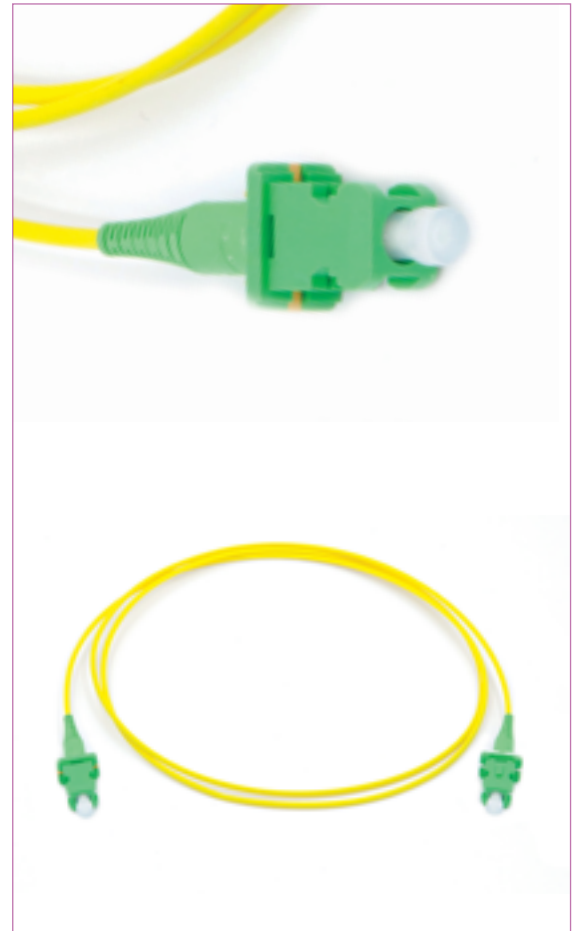
Fiber type	Select a singlemode fiber from page B.6.
Buffer type	900µ tight flame retardant LSOH coating
Strength elements	Served aramid and glass yarn
Minicable jacket material	Flame retardant LSOH compound

Standard & EU Directives Conformance

- Relevant sections of ANSI/TIA-568-C.3
- Relevant sections of ISO/IEC 11801
- Relevant sections of EN 50173
- Relevant sections of ANSI/TIA/EIA-604 (FOCIS)
- Relevant sections of IEC 60874
- Relevant sections of IEC 61753
- Relevant sections of IEC 61754
- IEC 60332-1 flame test
- IEC 60754 & IEC 61034
- EU Directive 2011/65/EU (RoHS-2)

Mechanical Properties

Short term bend radius	20xOD mm
Long term bend radius	10xOD mm
Operating temperature	-20 to +70C
Jacket color	Yellow



Ordering Information

FF: Fiber Type

Description	Key Color	Length m	Cable OD mm	Packaging	P/N
SC/APC-SC/APC Simplex Singlemode LSOH Port-LockLine Cord	Black	0.5	3.0	1/Bag - 12/Box	28CFFKK005P-BK61
SC/APC-SC/APC Simplex Singlemode LSOH Port-LockLine Cord	Black	1.0	3.0	1/Bag - 12/Box	28CFFKK010P-BK61
SC/APC-SC/APC Simplex Singlemode LSOH Port-LockLine Cord	Black	2.0	3.0	1/Bag - 12/Box	28CFFKK020P-BK61
SC/APC-SC/APC Simplex Singlemode LSOH Port-LockLine Cord	Black	3.0	3.0	1/Bag - 12/Box	28CFFKK030P-BK61
SC/APC-SC/APC Simplex Singlemode LSOH Port-LockLine Cord	Black	5.0	3.0	1/Bag - 12/Box	28CFFKK050P-BK61
SC/APC-SC/APC Simplex Singlemode LSOH Port-LockLine Cord	Black	10	3.0	1/Bag - 12/Box	28CFFKK100P-BK61
SC/APC-SC/APC Simplex Singlemode LSOH Port-LockLine Cord	Black	20	3.0	1/Bag - 12/Box	28CFFKK200P-BK61
SC/APC-SC/APC Simplex Singlemode LSOH Port-LockLine Cord	White	0.5	3.0	1/Bag - 12/Box	28CFFKK005P-WT61
SC/APC-SC/APC Simplex Singlemode LSOH Port-LockLine Cord	White	1.0	3.0	1/Bag - 12/Box	28CFFKK010P-WT61
SC/APC-SC/APC Simplex Singlemode LSOH Port-LockLine Cord	White	2.0	3.0	1/Bag - 12/Box	28CFFKK020P-WT61
SC/APC-SC/APC Simplex Singlemode LSOH Port-LockLine Cord	White	3.0	3.0	1/Bag - 12/Box	28CFFKK030P-WT61
SC/APC-SC/APC Simplex Singlemode LSOH Port-LockLine Cord	White	5.0	3.0	1/Bag - 12/Box	28CFFKK050P-WT61
SC/APC-SC/APC Simplex Singlemode LSOH Port-LockLine Cord	White	10	3.0	1/Bag - 12/Box	28CFFKK100P-WT61
SC/APC-SC/APC Simplex Singlemode LSOH Port-LockLine Cord	White	20	3.0	1/Bag - 12/Box	28CFFKK200P-WT61
SC/APC-SC/APC Simplex Singlemode LSOH Port-LockLine Cord	Red	0.5	3.0	1/Bag - 12/Box	28CFFKK005P-RD61
SC/APC-SC/APC Simplex Singlemode LSOH Port-LockLine Cord	Red	1.0	3.0	1/Bag - 12/Box	28CFFKK010P-RD61
SC/APC-SC/APC Simplex Singlemode LSOH Port-LockLine Cord	Red	2.0	3.0	1/Bag - 12/Box	28CFFKK020P-RD61
SC/APC-SC/APC Simplex Singlemode LSOH Port-LockLine Cord	Red	3.0	3.0	1/Bag - 12/Box	28CFFKK030P-RD61
SC/APC-SC/APC Simplex Singlemode LSOH Port-LockLine Cord	Red	5.0	3.0	1/Bag - 12/Box	28CFFKK050P-RD61
SC/APC-SC/APC Simplex Singlemode LSOH Port-LockLine Cord	Red	10	3.0	1/Bag - 12/Box	28CFFKK100P-RD61
SC/APC-SC/APC Simplex Singlemode LSOH Port-LockLine Cord	Red	20	3.0	1/Bag - 12/Box	28CFFKK200P-RD61
SC/APC-SC/APC Simplex Singlemode LSOH Port-LockLine Cord	Yellow	0.5	3.0	1/Bag - 12/Box	28CFFKK005P-YL61
SC/APC-SC/APC Simplex Singlemode LSOH Port-LockLine Cord	Yellow	1.0	3.0	1/Bag - 12/Box	28CFFKK010P-YL61
SC/APC-SC/APC Simplex Singlemode LSOH Port-LockLine Cord	Yellow	2.0	3.0	1/Bag - 12/Box	28CFFKK020P-YL61
SC/APC-SC/APC Simplex Singlemode LSOH Port-LockLine Cord	Yellow	3.0	3.0	1/Bag - 12/Box	28CFFKK030P-YL61
SC/APC-SC/APC Simplex Singlemode LSOH Port-LockLine Cord	Yellow	5.0	3.0	1/Bag - 12/Box	28CFFKK050P-YL61
SC/APC-SC/APC Simplex Singlemode LSOH Port-LockLine Cord	Yellow	10	3.0	1/Bag - 12/Box	28CFFKK100P-YL61
SC/APC-SC/APC Simplex Singlemode LSOH Port-LockLine Cord	Yellow	20	3.0	1/Bag - 12/Box	28CFFKK200P-YL61

AT&T Port-LockLine

Fiber Optic LC/UPC Duplex Multimode Port-Locking Uniboot Cords

Description

Fiber-optic modular cords with color-coded locking mechanism: Duplex Multimode Uniboot cords made with multimode fibers and terminated with LC/UPC connectors. Polarity switch is enabled.

Additional combinations can be selected using the information on page B.3.

Fiber type	Select a multimode fiber from page B.6.
Buffer type	900µ tight flame retardant LSOH coating
Strength elements	Served aramid and glass yarn
Minicable jacket material	Flame retardant LSOH compound

Standard & EU Directives Conformance

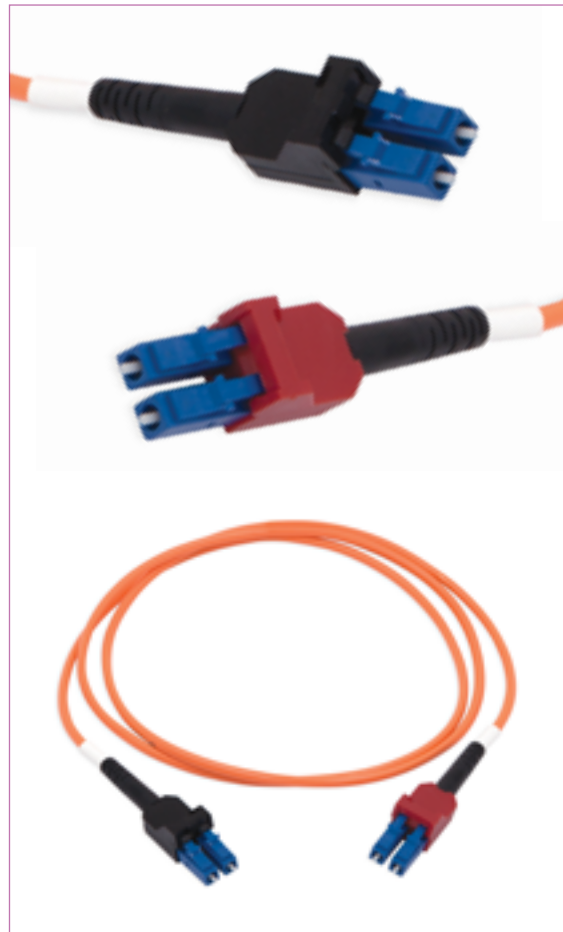
- Relevant sections of ANSI/TIA-568-C.3
- Relevant sections of ISO/IEC 11801
- Relevant sections of EN 50173
- Relevant sections of ANSI/TIA/EIA-604 (FOCIS)
- Relevant sections of IEC 60874
- Relevant sections of IEC 61753
- Relevant sections of IEC 61754
- IEC 60332-1 flame test
- IEC 60754 & IEC 61034
- EU Directive 2011/65/EU (RoHS-2)

Mechanical Properties

Short term bend radius	20xOD mm
Long term bend radius	10xOD mm
Operating temperature	-20 to +70C
Jacket color	MM OM1 & OM2: Orange MM OM3: Turquoise MM OM4: Purple

Ordering Information

FF: Fiber Type



Description	Key Color	Length m	Cable OD mm	Packaging	P/N
LC/UPC - LC/UPC Multimode Port-LockLine Duplex Uniboot Cord	Black	0.5	2.0	1/Bag	28UFFPP005P-BK61
LC/UPC - LC/UPC Multimode Port-LockLine Duplex Uniboot Cord	Black	1.0	2.0	1/Bag	28UFFPP010P-BK61
LC/UPC - LC/UPC Multimode Port-LockLine Duplex Uniboot Cord	Black	2.0	2.0	1/Bag	28UFFPP020P-BK61
LC/UPC - LC/UPC Multimode Port-LockLine Duplex Uniboot Cord	Black	3.0	2.0	1/Bag	28UFFPP030P-BK61
LC/UPC - LC/UPC Multimode Port-LockLine Duplex Uniboot Cord	Black	5.0	2.0	1/Bag	28UFFPP050P-BK61
LC/UPC - LC/UPC Multimode Port-LockLine Duplex Uniboot Cord	Black	10	2.0	1/Bag	28UFFPP100P-BK61
LC/UPC - LC/UPC Multimode Port-LockLine Duplex Uniboot Cord	Black	15	2.0	1/Bag	28UFFPP150P-BK61
LC/UPC - LC/UPC Multimode Port-LockLine Duplex Uniboot Cord	Black	20	2.0	1/Bag	28UFFPP200P-BK61
LC/UPC - LC/UPC Multimode Port-LockLine Duplex Uniboot Cord	White	0.5	2.0	1/Bag	28UFFPP005P-WT61
LC/UPC - LC/UPC Multimode Port-LockLine Duplex Uniboot Cord	White	1.0	2.0	1/Bag	28UFFPP010P-WT61
LC/UPC - LC/UPC Multimode Port-LockLine Duplex Uniboot Cord	White	2.0	2.0	1/Bag	28UFFPP020P-WT61
LC/UPC - LC/UPC Multimode Port-LockLine Duplex Uniboot Cord	White	3.0	2.0	1/Bag	28UFFPP030P-WT61
LC/UPC - LC/UPC Multimode Port-LockLine Duplex Uniboot Cord	White	5.0	2.0	1/Bag	28UFFPP050P-WT61
LC/UPC - LC/UPC Multimode Port-LockLine Duplex Uniboot Cord	White	10	2.0	1/Bag	28UFFPP100P-WT61
LC/UPC - LC/UPC Multimode Port-LockLine Duplex Uniboot Cord	White	15	2.0	1/Bag	28UFFPP150P-WT61
LC/UPC - LC/UPC Multimode Port-LockLine Duplex Uniboot Cord	White	20	2.0	1/Bag	28UFFPP200P-WT61
LC/UPC - LC/UPC Multimode Port-LockLine Duplex Uniboot Cord	Green	0.5	2.0	1/Bag	28UFFPP005P-GN61
LC/UPC - LC/UPC Multimode Port-LockLine Duplex Uniboot Cord	Green	1.0	2.0	1/Bag	28UFFPP010P-GN61
LC/UPC - LC/UPC Multimode Port-LockLine Duplex Uniboot Cord	Green	2.0	2.0	1/Bag	28UFFPP020P-GN61
LC/UPC - LC/UPC Multimode Port-LockLine Duplex Uniboot Cord	Green	3.0	2.0	1/Bag	28UFFPP030P-GN61
LC/UPC - LC/UPC Multimode Port-LockLine Duplex Uniboot Cord	Green	5.0	2.0	1/Bag	28UFFPP050P-GN61
LC/UPC - LC/UPC Multimode Port-LockLine Duplex Uniboot Cord	Green	10	2.0	1/Bag	28UFFPP100P-GN61
LC/UPC - LC/UPC Multimode Port-LockLine Duplex Uniboot Cord	Green	15	2.0	1/Bag	28UFFPP150P-GN61
LC/UPC - LC/UPC Multimode Port-LockLine Duplex Uniboot Cord	Green	20	2.0	1/Bag	28UFFPP200P-GN61

Continued on page F.5.2.1.1.a

AT&T Port-LockLine

Fiber Optic LC/UPC Duplex Multimode Port-Locking Uniboot Cords (contd.)

Ordering Information

FF: Fiber Type

Description	Key Color	Length m	Cable OD mm	Packaging	P/N
LC/UPC - LC/UPC Multimode Port-LockLine Duplex Uniboot Cord	Blue	0.5	2.0	1/Bag	28UFFPP005P-BL61
LC/UPC - LC/UPC Multimode Port-LockLine Duplex Uniboot Cord	Blue	1.0	2.0	1/Bag	28UFFPP010P-BL61
LC/UPC - LC/UPC Multimode Port-LockLine Duplex Uniboot Cord	Blue	2.0	2.0	1/Bag	28UFFPP020P-BL61
LC/UPC - LC/UPC Multimode Port-LockLine Duplex Uniboot Cord	Blue	3.0	2.0	1/Bag	28UFFPP030P-BL61
LC/UPC - LC/UPC Multimode Port-LockLine Duplex Uniboot Cord	Blue	5.0	2.0	1/Bag	28UFFPP050P-BL61
LC/UPC - LC/UPC Multimode Port-LockLine Duplex Uniboot Cord	Blue	10	2.0	1/Bag	28UFFPP100P-BL61
LC/UPC - LC/UPC Multimode Port-LockLine Duplex Uniboot Cord	Blue	15	2.0	1/Bag	28UFFPP150P-BL61
LC/UPC - LC/UPC Multimode Port-LockLine Duplex Uniboot Cord	Blue	20	2.0	1/Bag	28UFFPP200P-BL61
LC/UPC - LC/UPC Multimode Port-LockLine Duplex Uniboot Cord	Gray	0.5	2.0	1/Bag	28UFFPP005P-GL61
LC/UPC - LC/UPC Multimode Port-LockLine Duplex Uniboot Cord	Gray	1.0	2.0	1/Bag	28UFFPP010P-GL61
LC/UPC - LC/UPC Multimode Port-LockLine Duplex Uniboot Cord	Gray	2.0	2.0	1/Bag	28UFFPP020P-GL61
LC/UPC - LC/UPC Multimode Port-LockLine Duplex Uniboot Cord	Gray	3.0	2.0	1/Bag	28UFFPP030P-GL61
LC/UPC - LC/UPC Multimode Port-LockLine Duplex Uniboot Cord	Gray	5.0	2.0	1/Bag	28UFFPP050P-GL61
LC/UPC - LC/UPC Multimode Port-LockLine Duplex Uniboot Cord	Gray	10	2.0	1/Bag	28UFFPP100P-GL61
LC/UPC - LC/UPC Multimode Port-LockLine Duplex Uniboot Cord	Gray	15	2.0	1/Bag	28UFFPP150P-GL61
LC/UPC - LC/UPC Multimode Port-LockLine Duplex Uniboot Cord	Gray	20	2.0	1/Bag	28UFFPP200P-GL61
LC/UPC - LC/UPC Multimode Port-LockLine Duplex Uniboot Cord	Red	0.5	2.0	1/Bag	28UFFPP005P-RD61
LC/UPC - LC/UPC Multimode Port-LockLine Duplex Uniboot Cord	Red	1.0	2.0	1/Bag	28UFFPP010P-RD61
LC/UPC - LC/UPC Multimode Port-LockLine Duplex Uniboot Cord	Red	2.0	2.0	1/Bag	28UFFPP020P-RD61
LC/UPC - LC/UPC Multimode Port-LockLine Duplex Uniboot Cord	Red	3.0	2.0	1/Bag	28UFFPP030P-RD61
LC/UPC - LC/UPC Multimode Port-LockLine Duplex Uniboot Cord	Red	5.0	2.0	1/Bag	28UFFPP050P-RD61
LC/UPC - LC/UPC Multimode Port-LockLine Duplex Uniboot Cord	Red	10	2.0	1/Bag	28UFFPP100P-RD61
LC/UPC - LC/UPC Multimode Port-LockLine Duplex Uniboot Cord	Red	15	2.0	1/Bag	28UFFPP150P-RD61
LC/UPC - LC/UPC Multimode Port-LockLine Duplex Uniboot Cord	Red	20	2.0	1/Bag	28UFFPP200P-RD61
LC/UPC - LC/UPC Multimode Port-LockLine Duplex Uniboot Cord	Orange	0.5	2.0	1/Bag	28UFFPP005P-OR61
LC/UPC - LC/UPC Multimode Port-LockLine Duplex Uniboot Cord	Orange	1.0	2.0	1/Bag	28UFFPP010P-OR61
LC/UPC - LC/UPC Multimode Port-LockLine Duplex Uniboot Cord	Orange	2.0	2.0	1/Bag	28UFFPP020P-OR61
LC/UPC - LC/UPC Multimode Port-LockLine Duplex Uniboot Cord	Orange	3.0	2.0	1/Bag	28UFFPP030P-OR61
LC/UPC - LC/UPC Multimode Port-LockLine Duplex Uniboot Cord	Orange	5.0	2.0	1/Bag	28UFFPP050P-OR61
LC/UPC - LC/UPC Multimode Port-LockLine Duplex Uniboot Cord	Orange	10	2.0	1/Bag	28UFFPP100P-OR61
LC/UPC - LC/UPC Multimode Port-LockLine Duplex Uniboot Cord	Orange	15	2.0	1/Bag	28UFFPP150P-OR61
LC/UPC - LC/UPC Multimode Port-LockLine Duplex Uniboot Cord	Orange	20	2.0	1/Bag	28UFFPP200P-OR61
LC/UPC - LC/UPC Multimode Port-LockLine Duplex Uniboot Cord	Yellow	0.5	2.0	1/Bag	28UFFPP005P-YL61
LC/UPC - LC/UPC Multimode Port-LockLine Duplex Uniboot Cord	Yellow	1.0	2.0	1/Bag	28UFFPP010P-YL61
LC/UPC - LC/UPC Multimode Port-LockLine Duplex Uniboot Cord	Yellow	2.0	2.0	1/Bag	28UFFPP020P-YL61
LC/UPC - LC/UPC Multimode Port-LockLine Duplex Uniboot Cord	Yellow	3.0	2.0	1/Bag	28UFFPP030P-YL61
LC/UPC - LC/UPC Multimode Port-LockLine Duplex Uniboot Cord	Yellow	5.0	2.0	1/Bag	28UFFPP050P-YL61
LC/UPC - LC/UPC Multimode Port-LockLine Duplex Uniboot Cord	Yellow	10	2.0	1/Bag	28UFFPP100P-YL61
LC/UPC - LC/UPC Multimode Port-LockLine Duplex Uniboot Cord	Yellow	15	2.0	1/Bag	28UFFPP150P-YL61
LC/UPC - LC/UPC Multimode Port-LockLine Duplex Uniboot Cord	Yellow	20	2.0	1/Bag	28UFFPP200P-YL61

AT&T Port-LockLine

Fiber Optic LC/UPC Duplex Singlemode Port Locking Uniboot Cords

Description

Fiber-optic modular cords with color-coded locking mechanism: Duplex Singlemode Uniboot cords made with singlemode fibers and terminated with LC/UPC connectors. Polarity switch is enabled.

Additional combinations can be selected using the information on page B.3.

Fiber type	Select a singlemode fiber from page B.6.
Buffer type	900µ tight flame retardant LSOH coating
Strength elements	Served aramid and glass yarn
Minicable jacket material	Flame retardant LSOH compound

Standard & EU Directives Conformance

- Relevant sections of ANSI/TIA-568-C.3
- Relevant sections of ISO/IEC 11801
- Relevant sections of EN 50173
- Relevant sections of ANSI/TIA/EIA-604 (FOCIS)
- Relevant sections of IEC 60874
- Relevant sections of IEC 61753
- Relevant sections of IEC 61754
- IEC 60332-1 flame test
- IEC 60754 & IEC 61034
- EU Directive 2011/65/EU (RoHS-2)

Mechanical Properties

Short term bend radius	20xOD mm
Long term bend radius	10xOD mm
Operating temperature	-20 to +70C
Jacket color	Yellow



Ordering Information

FF: Fiber Type

Description	Key Color	Length m	Cable OD mm	Packaging	P/N
LC/UPC - LC/UPC Singlemode Port-LockLine Duplex Uniboot Cord	Black	0.5	2.0	1/Bag	28UFFQQ005P-BK61
LC/UPC - LC/UPC Singlemode Port-LockLine Duplex Uniboot Cord	Black	1.0	2.0	1/Bag	28UFFQQ010P-BK61
LC/UPC - LC/UPC Singlemode Port-LockLine Duplex Uniboot Cord	Black	2.0	2.0	1/Bag	28UFFQQ020P-BK61
LC/UPC - LC/UPC Singlemode Port-LockLine Duplex Uniboot Cord	Black	3.0	2.0	1/Bag	28UFFQQ030P-BK61
LC/UPC - LC/UPC Singlemode Port-LockLine Duplex Uniboot Cord	Black	5.0	2.0	1/Bag	28UFFQQ050P-BK61
LC/UPC - LC/UPC Singlemode Port-LockLine Duplex Uniboot Cord	Black	10	2.0	1/Bag	28UFFQQ100P-BK61
LC/UPC - LC/UPC Singlemode Port-LockLine Duplex Uniboot Cord	Black	15	2.0	1/Bag	28UFFQQ150P-BK61
LC/UPC - LC/UPC Singlemode Port-LockLine Duplex Uniboot Cord	Black	20	2.0	1/Bag	28UFFQQ200P-BK61
LC/UPC - LC/UPC Singlemode Port-LockLine Duplex Uniboot Cord	White	0.5	2.0	1/Bag	28UFFQQ005P-WT61
LC/UPC - LC/UPC Singlemode Port-LockLine Duplex Uniboot Cord	White	1.0	2.0	1/Bag	28UFFQQ010P-WT61
LC/UPC - LC/UPC Singlemode Port-LockLine Duplex Uniboot Cord	White	2.0	2.0	1/Bag	28UFFQQ020P-WT61
LC/UPC - LC/UPC Singlemode Port-LockLine Duplex Uniboot Cord	White	3.0	2.0	1/Bag	28UFFQQ030P-WT61
LC/UPC - LC/UPC Singlemode Port-LockLine Duplex Uniboot Cord	White	5.0	2.0	1/Bag	28UFFQQ050P-WT61
LC/UPC - LC/UPC Singlemode Port-LockLine Duplex Uniboot Cord	White	10	2.0	1/Bag	28UFFQQ100P-WT61
LC/UPC - LC/UPC Singlemode Port-LockLine Duplex Uniboot Cord	White	15	2.0	1/Bag	28UFFQQ150P-WT61
LC/UPC - LC/UPC Singlemode Port-LockLine Duplex Uniboot Cord	White	20	2.0	1/Bag	28UFFQQ200P-WT61
LC/UPC - LC/UPC Singlemode Port-LockLine Duplex Uniboot Cord	Green	0.5	2.0	1/Bag	28UFFQQ005P-GN61
LC/UPC - LC/UPC Singlemode Port-LockLine Duplex Uniboot Cord	Green	1.0	2.0	1/Bag	28UFFQQ010P-GN61
LC/UPC - LC/UPC Singlemode Port-LockLine Duplex Uniboot Cord	Green	2.0	2.0	1/Bag	28UFFQQ020P-GN61
LC/UPC - LC/UPC Singlemode Port-LockLine Duplex Uniboot Cord	Green	3.0	2.0	1/Bag	28UFFQQ030P-GN61
LC/UPC - LC/UPC Singlemode Port-LockLine Duplex Uniboot Cord	Green	5.0	2.0	1/Bag	28UFFQQ050P-GN61
LC/UPC - LC/UPC Singlemode Port-LockLine Duplex Uniboot Cord	Green	10	2.0	1/Bag	28UFFQQ100P-GN61
LC/UPC - LC/UPC Singlemode Port-LockLine Duplex Uniboot Cord	Green	15	2.0	1/Bag	28UFFQQ150P-GN61
LC/UPC - LC/UPC Singlemode Port-LockLine Duplex Uniboot Cord	Green	20	2.0	1/Bag	28UFFQQ200P-GN61

Continued on page F.5.2.1.2a

AT&T Port-LockLine

Fiber Optic LC/UPC Duplex Singlemode Port Locking Uniboot Cords (contd.)

Ordering Information

FF: Fiber Type

Description	Key Color	Length m	Cable OD mm	Packaging	P/N
LC/UPC - LC/UPC Singlemode Port-LockLine Duplex Uniboot Cord	Blue	0.5	2.0	1/Bag	28UFFQQ005P-BL61
LC/UPC - LC/UPC Singlemode Port-LockLine Duplex Uniboot Cord	Blue	1.0	2.0	1/Bag	28UFFQQ010P-BL61
LC/UPC - LC/UPC Singlemode Port-LockLine Duplex Uniboot Cord	Blue	2.0	2.0	1/Bag	28UFFQQ020P-BL61
LC/UPC - LC/UPC Singlemode Port-LockLine Duplex Uniboot Cord	Blue	3.0	2.0	1/Bag	28UFFQQ030P-BL61
LC/UPC - LC/UPC Singlemode Port-LockLine Duplex Uniboot Cord	Blue	5.0	2.0	1/Bag	28UFFQQ050P-BL61
LC/UPC - LC/UPC Singlemode Port-LockLine Duplex Uniboot Cord	Blue	10	2.0	1/Bag	28UFFQQ100P-BL61
LC/UPC - LC/UPC Singlemode Port-LockLine Duplex Uniboot Cord	Blue	15	2.0	1/Bag	28UFFQQ150P-BL61
LC/UPC - LC/UPC Singlemode Port-LockLine Duplex Uniboot Cord	Blue	20	2.0	1/Bag	28UFFQQ200P-BL61
LC/UPC - LC/UPC Singlemode Port-LockLine Duplex Uniboot Cord	Gray	0.5	2.0	1/Bag	28UFFQQ005P-GL61
LC/UPC - LC/UPC Singlemode Port-LockLine Duplex Uniboot Cord	Gray	1.0	2.0	1/Bag	28UFFQQ010P-GL61
LC/UPC - LC/UPC Singlemode Port-LockLine Duplex Uniboot Cord	Gray	2.0	2.0	1/Bag	28UFFQQ020P-GL61
LC/UPC - LC/UPC Singlemode Port-LockLine Duplex Uniboot Cord	Gray	3.0	2.0	1/Bag	28UFFQQ030P-GL61
LC/UPC - LC/UPC Singlemode Port-LockLine Duplex Uniboot Cord	Gray	5.0	2.0	1/Bag	28UFFQQ050P-GL61
LC/UPC - LC/UPC Singlemode Port-LockLine Duplex Uniboot Cord	Gray	10	2.0	1/Bag	28UFFQQ100P-GL61
LC/UPC - LC/UPC Singlemode Port-LockLine Duplex Uniboot Cord	Gray	15	2.0	1/Bag	28UFFQQ150P-GL61
LC/UPC - LC/UPC Singlemode Port-LockLine Duplex Uniboot Cord	Gray	20	2.0	1/Bag	28UFFQQ200P-GL61
LC/UPC - LC/UPC Singlemode Port-LockLine Duplex Uniboot Cord	Red	0.5	2.0	1/Bag	28UFFQQ005P-RD61
LC/UPC - LC/UPC Singlemode Port-LockLine Duplex Uniboot Cord	Red	1.0	2.0	1/Bag	28UFFQQ010P-RD61
LC/UPC - LC/UPC Singlemode Port-LockLine Duplex Uniboot Cord	Red	2.0	2.0	1/Bag	28UFFQQ020P-RD61
LC/UPC - LC/UPC Singlemode Port-LockLine Duplex Uniboot Cord	Red	3.0	2.0	1/Bag	28UFFQQ030P-RD61
LC/UPC - LC/UPC Singlemode Port-LockLine Duplex Uniboot Cord	Red	5.0	2.0	1/Bag	28UFFQQ050P-RD61
LC/UPC - LC/UPC Singlemode Port-LockLine Duplex Uniboot Cord	Red	10	2.0	1/Bag	28UFFQQ100P-RD61
LC/UPC - LC/UPC Singlemode Port-LockLine Duplex Uniboot Cord	Red	15	2.0	1/Bag	28UFFQQ150P-RD61
LC/UPC - LC/UPC Singlemode Port-LockLine Duplex Uniboot Cord	Red	20	2.0	1/Bag	28UFFQQ200P-RD61
LC/UPC - LC/UPC Singlemode Port-LockLine Duplex Uniboot Cord	Orange	0.5	2.0	1/Bag	28UFFQQ005P-OR61
LC/UPC - LC/UPC Singlemode Port-LockLine Duplex Uniboot Cord	Orange	1.0	2.0	1/Bag	28UFFQQ010P-OR61
LC/UPC - LC/UPC Singlemode Port-LockLine Duplex Uniboot Cord	Orange	2.0	2.0	1/Bag	28UFFQQ020P-OR61
LC/UPC - LC/UPC Singlemode Port-LockLine Duplex Uniboot Cord	Orange	3.0	2.0	1/Bag	28UFFQQ030P-OR61
LC/UPC - LC/UPC Singlemode Port-LockLine Duplex Uniboot Cord	Orange	5.0	2.0	1/Bag	28UFFQQ050P-OR61
LC/UPC - LC/UPC Singlemode Port-LockLine Duplex Uniboot Cord	Orange	10	2.0	1/Bag	28UFFQQ100P-OR61
LC/UPC - LC/UPC Singlemode Port-LockLine Duplex Uniboot Cord	Orange	15	2.0	1/Bag	28UFFQQ150P-OR61
LC/UPC - LC/UPC Singlemode Port-LockLine Duplex Uniboot Cord	Orange	20	2.0	1/Bag	28UFFQQ200P-OR61
LC/UPC - LC/UPC Singlemode Port-LockLine Duplex Uniboot Cord	Yellow	0.5	2.0	1/Bag	28UFFQQ005P-YL61
LC/UPC - LC/UPC Singlemode Port-LockLine Duplex Uniboot Cord	Yellow	1.0	2.0	1/Bag	28UFFQQ010P-YL61
LC/UPC - LC/UPC Singlemode Port-LockLine Duplex Uniboot Cord	Yellow	2.0	2.0	1/Bag	28UFFQQ020P-YL61
LC/UPC - LC/UPC Singlemode Port-LockLine Duplex Uniboot Cord	Yellow	3.0	2.0	1/Bag	28UFFQQ030P-YL61
LC/UPC - LC/UPC Singlemode Port-LockLine Duplex Uniboot Cord	Yellow	5.0	2.0	1/Bag	28UFFQQ050P-YL61
LC/UPC - LC/UPC Singlemode Port-LockLine Duplex Uniboot Cord	Yellow	10	2.0	1/Bag	28UFFQQ100P-YL61
LC/UPC - LC/UPC Singlemode Port-LockLine Duplex Uniboot Cord	Yellow	15	2.0	1/Bag	28UFFQQ150P-YL61
LC/UPC - LC/UPC Singlemode Port-LockLine Duplex Uniboot Cord	Yellow	20	2.0	1/Bag	28UFFQQ200P-YL61

AT&T Port-LockLine

Fiber Optic Multimode and Singlemode Port-Locking Pigtails

Description

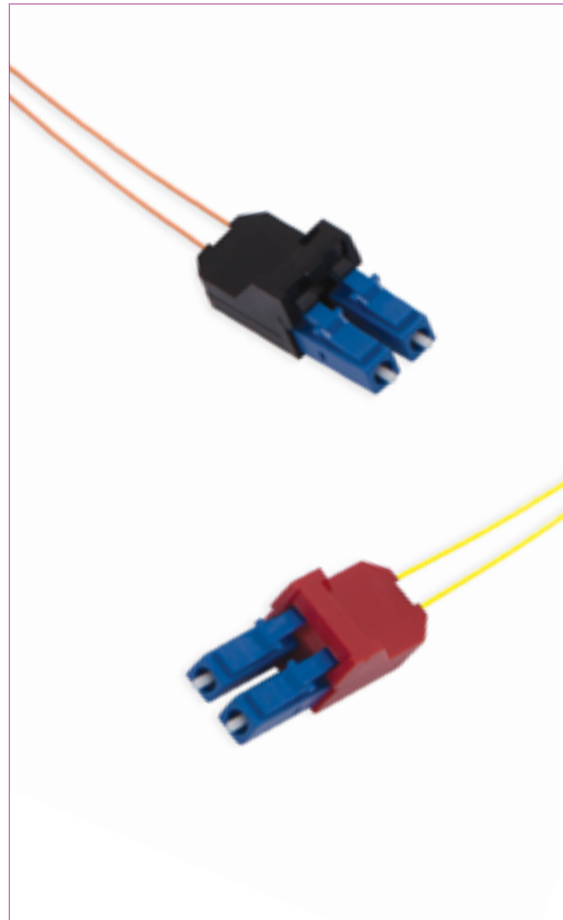
Fiber-optic LC/UPC Duplex pigtailed with color-coded locking mechanism: Multimode or singlemode fibers, terminated with LC/UPC connectors. Additional combinations can be selected using the information on page B.3.
 Buffer type 900µ tight flame retardant LSOH coating

Standard & EU Directives Conformance

- Relevant sections of ANSI/TIA-568-C.3
- Relevant sections of ISO/IEC 11801
- Relevant sections of EN 50173
- Relevant sections of ANSI/TIA/EIA-604 (FOCIS)
- Relevant sections of IEC 60874
- Relevant sections of IEC 61753
- Relevant sections of IEC 61754
- IEC 60332-1 flame test
- IEC 60754 & IEC 61034
- EU Directive 2011/65/EU (RoHS-2)

Mechanical Properties

Short term bend radius	20xOD mm
Long term bend radius	10xOD mm
Operating temperature	-20 to +80C
Buffer color	Transparent
Default length	1.5m (other lengths available)



Ordering Information

FF: Fiber Type

Description	Key Color	Length m	Buffer OD mm	Packaging	P/N
LC/UPC Singlemode Port-LockLine Duplex Pigtail	Black	1.5	0.9	6/Bag - 30/Box	28QFF0Q015P-BK66
LC/UPC Singlemode Port-LockLine Duplex Pigtail	White	1.5	0.9	6/Bag - 30/Box	28QFF0Q015P-WT66
LC/UPC Singlemode Port-LockLine Duplex Pigtail	Green	1.5	0.9	6/Bag - 30/Box	28QFF0Q015P-GN66
LC/UPC Singlemode Port-LockLine Duplex Pigtail	Blue	1.5	0.9	6/Bag - 30/Box	28QFF0Q015P-BL66
LC/UPC Singlemode Port-LockLine Duplex Pigtail	Gray	1.5	0.9	6/Bag - 30/Box	28QFF0Q015P-GL66
LC/UPC Singlemode Port-LockLine Duplex Pigtail	Red	1.5	0.9	6/Bag - 30/Box	28QFF0Q015P-RD66
LC/UPC Singlemode Port-LockLine Duplex Pigtail	Orange	1.5	0.9	6/Bag - 30/Box	28QFF0Q015P-OR66
LC/UPC Singlemode Port-LockLine Duplex Pigtail	Yellow	1.5	0.9	6/Bag - 30/Box	28QFF0Q015P-YL66
LC/UPC Multimode Port-LockLine Duplex Pigtail	Black	1.5	0.9	6/Bag - 30/Box	28QFF0P015P-BK66
LC/UPC Multimode Port-LockLine Duplex Pigtail	White	1.5	0.9	6/Bag - 30/Box	28QFF0P015P-WT66
LC/UPC Multimode Port-LockLine Duplex Pigtail	Green	1.5	0.9	6/Bag - 30/Box	28QFF0P015P-GN66
LC/UPC Multimode Port-LockLine Duplex Pigtail	Blue	1.5	0.9	6/Bag - 30/Box	28QFF0P015P-BL66
LC/UPC Multimode Port-LockLine Duplex Pigtail	Gray	1.5	0.9	6/Bag - 30/Box	28QFF0P015P-GL66
LC/UPC Multimode Port-LockLine Duplex Pigtail	Red	1.5	0.9	6/Bag - 30/Box	28QFF0P015P-RD66
LC/UPC Multimode Port-LockLine Duplex Pigtail	Orange	1.5	0.9	6/Bag - 30/Box	28QFF0P015P-OR66
LC/UPC Multimode Port-LockLine Duplex Pigtail	Yellow	1.5	0.9	6/Bag - 30/Box	28QFF0P015P-YL66

AT&T Port-LockLine

Fiber Optic SC Simplex Universal Port Locking Plugs

Description

Fiber-optic modular plugs with color-coded locking mechanism: Simplex port-locking plugs compatible with all simplex SC ports. The color-coded plugs can be extracted only with matching colored extraction keys.

Fiber type	Compatible with all fiber types
Buffer type	Compatible with all buffer types
Construction material	Flame retardant plastic material



Standard & EU Directives Conformance

- UL 94V-0 flame test
- EU Directive 2011/65/EU (RoHS-2)

Mechanical Properties

Operating temperature	-20 to +70C
Optional colors	See ordering information

Ordering Information

Description	Key Color	Packaging	P/N
SC Simplex Port-LockLine Universal Port Blocker	Black	50/Bag	53LFPNVSC1P-BK6A
SC Simplex Port-LockLine Universal Port Blocker	White	50/Bag	53LFPNVSC1P-WT6A
SC Simplex Port-LockLine Universal Port Blocker	Red	50/Bag	53LFPNVSC1P-RD6A
SC Simplex Port-LockLine Universal Port Blocker	Yellow	50/Bag	53LFPNVSC1P-YL6A

AT&T Port-LockLine

Fiber Optic LC Duplex Universal Port Locking Plugs

Description

Fiber-optic modular plugs with color-coded locking mechanism: Duplex port-locking plugs compatible with all duplex LC ports. The color-coded plugs can be extracted only with matching colored extraction keys.

Fiber type	Compatible with all fiber types
Buffer type	Compatible with all buffer types
Construction material	Flame retardant plastic material

Standard & EU Directives Conformance

- UL 94V-0 flame test
- EU Directive 2011/65/EU (RoHS-2)

Mechanical Properties

Operating temperature	-20 to +70C
Optional colors	See ordering information



Ordering Information

Description	Key Color	Packaging	P/N
LC Duplex Port-LockLine Universal Port Blocker	Black	50/Bag	53LFPNVLC2P-BK6A
LC Duplex Port-LockLine Universal Port Blocker	White	50/Bag	53LFPNVLC2P-WT6A
LC Duplex Port-LockLine Universal Port Blocker	Green	50/Bag	53LFPNVLC2P-GN6A
LC Duplex Port-LockLine Universal Port Blocker	Blue	50/Bag	53LFPNVLC2P-BL6A
LC Duplex Port-LockLine Universal Port Blocker	Orange	50/Bag	53LFPNVLC2P-OR6A
LC Duplex Port-LockLine Universal Port Blocker	Red	50/Bag	53LFPNVLC2P-RD6A
LC Duplex Port-LockLine Universal Port Blocker	Yellow	50/Bag	53LFPNVLC2P-YL6A
LC Duplex Port-LockLine Universal Port Blocker	Gray	50/Bag	53LFPNVLC2P-GL6A

AT&T Port-LockLine

Fiber Optic SC Simplex Universal Extraction Keys

Description

Fiber-optic color-coded extraction keys:

Extraction keys for all simplex SC modular cords and port-locking plugs. The color-coded keys fit only matching colored cords and plugs.

Fiber type	Compatible with all fiber types
Buffer type	Compatible with all buffer types
Construction material	Flame retardant plastic material

Standard & EU Directives Conformance

- UL 94V-0 flame test
- EU Directive 2011/65/EU (RoHS-2)

Mechanical Properties

Operating temperature	-20 to +70C
Optional colors	See ordering information



Ordering Information

Description	Key Color	Packaging	P/N
SC Simplex Port-LockLine Extraction Key	Black	50/Bag	53LFPNVSC1K-BK6A
SC Simplex Port-LockLine Extraction Key	White	50/Bag	53LFPNVSC1K-WT6A
SC Simplex Port-LockLine Extraction Key	Red	50/Bag	53LFPNVSC1K-RD6A
SC Simplex Port-LockLine Extraction Key	Yellow	50/Bag	53LFPNVSC1K-YL6A

AT&T Port-LockLine

Fiber Optic LC Duplex Universal Extraction Keys

Description

Fiber-optic color-coded extraction keys:
Extraction keys for all duplex LC modular cords and port-locking plugs.
The color-coded keys fit only matching colored cords and plugs.

Fiber type	Compatible with all fiber types
Buffer type	Compatible with all buffer types
Construction material	Flame retardant plastic material

Standard & EU Directives Conformance

- UL 94V-0 flame test
- EU Directive 2011/65/EU (RoHS-2)

Mechanical Properties

Operating temperature	-20 to +70C
Optional colors	See ordering information



Ordering Information

Description	Key Color	Packaging	P/N
LC Duplex Port-LockLine Extraction Key	Black	50/Bag	53LFPNVLC2K-BK6A
LC Duplex Port-LockLine Extraction Key	White	50/Bag	53LFPNVLC2K-WT6A
LC Duplex Port-LockLine Extraction Key	Green	50/Bag	53LFPNVLC2K-GN6A
LC Duplex Port-LockLine Extraction Key	Blue	50/Bag	53LFPNVLC2K-BL6A
LC Duplex Port-LockLine Extraction Key	Orange	50/Bag	53LFPNVLC2K-OR6A
LC Duplex Port-LockLine Extraction Key	Red	50/Bag	53LFPNVLC2K-RD6A
LC Duplex Port-LockLine Extraction Key	Yellow	50/Bag	53LFPNVLC2K-YL6A
LC Duplex Port-LockLine Extraction Key	Gray	50/Bag	53LFPNVLC2K-GL6A
LC Duplex Port-LockLine Extraction Key - Administrator	Purple	50/Bag	53LFPNVLC2K-PU6A

AT&T Port-LockLine

Compatible FiberLine Products

FiberLine - Panels

P/N	Description
27B00NV0XXY-BK1U	Basic 1U Blank 19" Fiber Optic Panel with splice kit

27B00NV0XXY-BK1U

└─ Y: Adaptor Type
└─ XX: Number of Ports

FiberLine - MTP Cassettes

P/N	Description
82XFFHV012P-BK51	Pre-loaded High-Density MTP Cassette LC/UPC, 12 ports

82XFFHV012P-BK51

└─ FF: Type A or Type B
└─ X: Fiber Type

FiberLine - Modules

P/N	Description
532FFNV012X-MT61	Pre-loaded Module Duplex LC/UPC, 6 ports

532FFNV012X-MT61

└─ X: Adaptor Type
└─ FF: Fiber Type





AT&T Cabling Systems Headquarters

Hohenstaufenring 62

50674 Cologne

Germany

T: +49.221.288.8337

F: +49.221.288.8342

www.att.com/cabling

Sales & Customer Support:

info_emea@cabling.att-mail.com

Technical support:

tech.support_emea@cabling.att-mail.com

AT&T Corporate Headquarters

208 South Akard St.

Dallas, TX 75202

USA