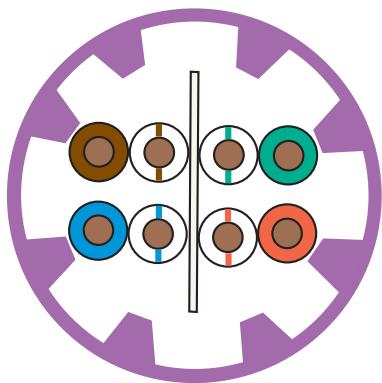
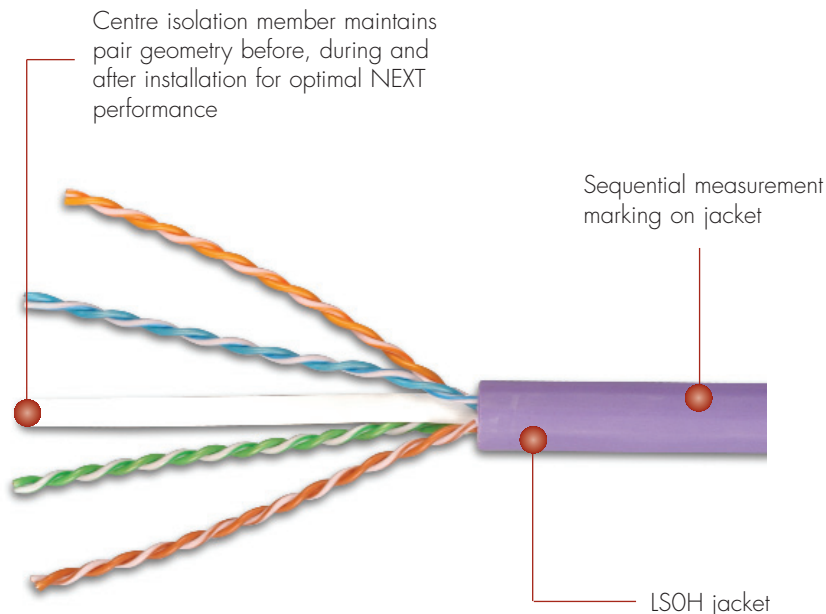


10G 6A™ UTP LSOH CABLE

Siemon's 10G 6A LSOH cable exceeds TIA-568-B.2-10 category 6A transmission performance requirements including alien crosstalk. When combined with our 10G 6A UTP connectivity, the result is a channel capable of supporting 10GBASE-T operation over 100-metre, 4-connector topologies. The 10G 6A UTP cabling system supports emerging and converging IP applications like Voice Over IP (VoIP), IP video and future 10 gigabit applications.



10G ip™

500 MHz
Meets or Exceeds
10GBASE-T and
Category 6A
Performance
Requirements

Cable Construction

- UTP
- 0.57mm (23 AWG) solid bare copper
- 9.0mm jacket diameter
- Centre isolation member

Compliance

- ISO/IEC 11801:2002 (Category 6)
- ISO/IEC 11801: 2002/Amendment 1:2008 (Class E_A)
- ISO/IEC 11801:2002/Amendment 2 (Category 6A draft)
- IEC 61156-5:2002 (Category 6)
- IEC 61156-5 ED 2.0 (draft)
- LSOH: IEC 60332-1, IEC 60754, and IEC 61034

CABLE — INTERNATIONAL



ELECTRICAL SPECIFICATIONS

DC Resistance	<9.38 Ω/100m
DC Resistance Unbalance	5%
Mutual Capacitance	5.6 nF/100m
Capacitance Unbalance	<330 pF/100m
Characteristic Impedance (ohms)	1 - 250 MHz: 100 ± 15% 100 - 750 MHz: 100 ± 22%
NVP	67%
LCL	30-10log (f/100)dB
PSANEXT	62.5-15log(f/100)dB
PSAACR-F	38.2-20log(f/100)dB
Delay Skew	≤ 45ns

PHYSICAL PROPERTIES

	LSOH
Pulling Tension (max)	110N (25 lb _f)
Bend Radius (min)	45.7mm (1.8 in.)
Installation Temperature	0 to 60°C (+32 to 140°F)
Storage Temperature	-20 to 75°C (-4 to 167°F)
Operating Temperature	-20 to 60°C (-4 to 140°F)

TRANSMISSION PERFORMANCE

ISO/IEC (DRAFT)

SIEMON TYPICAL

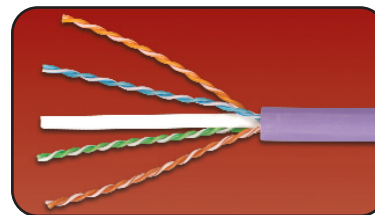
Frequency (MHz)	Insertion Loss (dB)		NEXT (dB)		PSNEXT (dB)		ACR (dB)		PSACR (dB)		ACR-F (dB)		PS ACR-F (dB)		Return Loss (dB)		Propagation Delay (ns)	
	ISO/IEC	SIEMON	ISO/IEC	SIEMON	ISO/IEC	SIEMON	ISO/IEC	SIEMON	ISO/IEC	SIEMON	ISO/IEC	SIEMON	ISO/IEC	SIEMON	ISO/IEC	SIEMON	ISO/IEC	SIEMON
1.0	2.1	1.8	75.3	96.0	72.3	92.0	73.2	94.2	70.2	90.2	68.0	92.0	65.0	85.0	20.0	29.0	570	540
4.0	3.8	3.3	66.3	89.0	63.3	83.0	62.5	85.7	59.5	79.7	56.0	80.0	53.0	73.0	23.0	32.0	552	522
10.0	5.9	5.2	60.3	83.0	57.3	77.0	54.4	77.8	51.4	71.8	48.0	72.0	45.0	65.0	25.0	36.0	545	515
16.0	7.5	6.7	57.2	80.0	54.2	74.0	49.8	73.3	46.8	67.3	43.9	68.0	40.9	61.0	25.0	36.0	543	513
20.0	8.4	7.5	55.8	79.0	52.8	73.0	47.4	71.5	44.4	65.5	42.0	68.0	39.0	59.0	25.0	36.0	542	512
31.25	10.5	9.4	52.9	76.0	49.9	70.0	42.4	66.6	39.4	60.6	38.1	62.0	35.1	55.0	23.6	34.0	540	510
62.5	15.0	13.7	48.4	71.0	45.4	65.0	33.4	57.3	30.4	51.3	32.1	56.0	29.1	49.0	21.5	34.0	539	509
100.0	19.1	17.8	45.3	68.0	42.3	62.0	26.2	50.2	23.2	44.2	28.0	52.0	25.0	45.0	20.1	33.0	538	507
200.0	27.6	25.8	40.8	64.0	37.8	58.0	13.2	38.2	10.2	32.2	22.0	46.0	19.0	39.0	18.0	31.0	537	506
250.0	31.1	29.2	39.3	62.0	36.3	56.0	8.3	32.8	5.3	26.8	20.0	44.0	17.0	37.0	17.3	31.0	536	506
300.0	34.3	31.5	38.1	61.0	35.1	55.0	3.9	29.5	0.9	23.5	18.5	42.0	15.5	35.0	17.3	29.0	536	505
350.0	37.2	33.8	37.1	60.0	34.1	54.0	-0.1	26.2	-3.1	20.2	17.1	41.0	14.1	34.0	17.3	28.0	535	505
400.0	40.1	37.9	36.3	59.0	33.3	53.0	-3.8	21.1	-6.8	15.1	16.0	40.0	13.0	33.0	17.3	27.0	535	505
500.0	45.3	42.1	34.8	57.0	31.8	51.0	-10.4	14.9	-13.4	8.9	14.0	39.0	11.0	32.0	17.3	26.0	536	505
625.0*	51.2	44.9	33.4	53.0	30.4	50.0	-17.8	8.1	-20.8	5.1	12.1	36.0	9.1	29.0	17.3	25.0	535	505
750.0*	56.7	49.0	32.2	51.0	29.2	49.0	-24.5	2.0	-27.5	0.0	10.5	35.0	7.5	27.0	17.3	25.0	535	504

*Performance for frequencies beyond TIA and ISO requirements are for information only.

All performance based on 100 metres.

10G 6A™ UTP LSOH 4-Pair Cable:

9C6L4-A5LSOH (IEC 60332-1), Violet Jacket, 305m Reel



9C6L4-A5

Because we continuously improve our products, Siemon reserves the right to change specifications and availability without prior notice.

MAX®, MC®, BladePatch® and 10G 6A™ are trademarks of Siemon

For related product information request Spec Sheet(s):

- 10G 6A UTP MAX® Modules (PROD-SS-MX10G6)
- 10G 6A UTP BladePatch® (PROD-SS-10G6ABDPOTP)
- 10G 6A UTP MC® Patch Cords (PROD-SS-MC10G6AUTP)
- 10G 6A MAX Panels (PROD-SS-10GPP)
- MAX International Faceplates (PROD-SS-MXFINT)

The Americas
Watertown, CT USA
Phone (1) 860 945 4200 US
Phone (1) 888 425 6165 Canada

Europe/Middle East/Africa
Surrey, England
Phone (44) 0 1932 571771

Asia/Pacific
Shanghai, P.R. China
Phone (86) 21 6390 6778

Japan
Tokyo, Japan
Phone (81) (3) 5437 1580